



WeeWheel

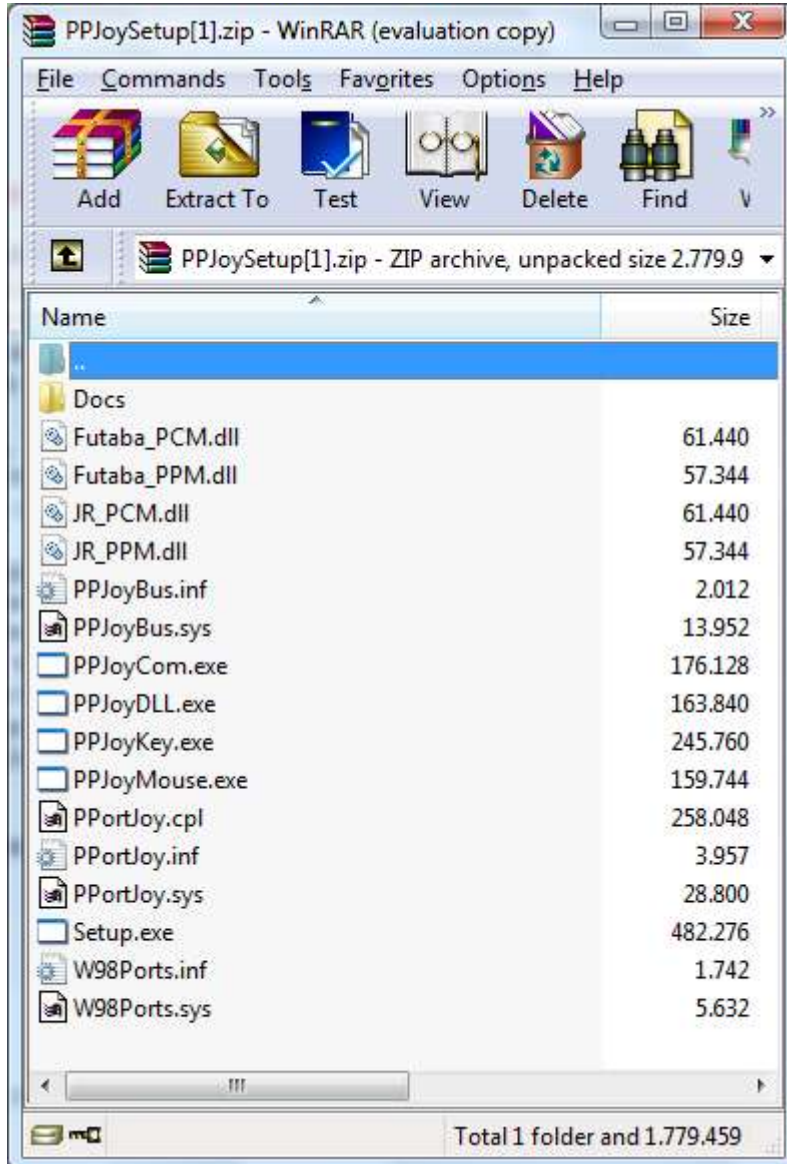
Ver. 1.23 (Lite, Only for Android)

Index:

Installing PPJoy (x86): 3
Installing PPJoy (x64): 8
Configuring PPjoy Joysticks: 14
Installing WeeWheel: 17
Configuring Bluetooth 21
Configuring WeeWheel 24
Running/Connecting Android: 25
Fine-tune WeeWheel 26
 Setting up the accelerometer 26
FAQ: 27

Installing PPJoy (x86):

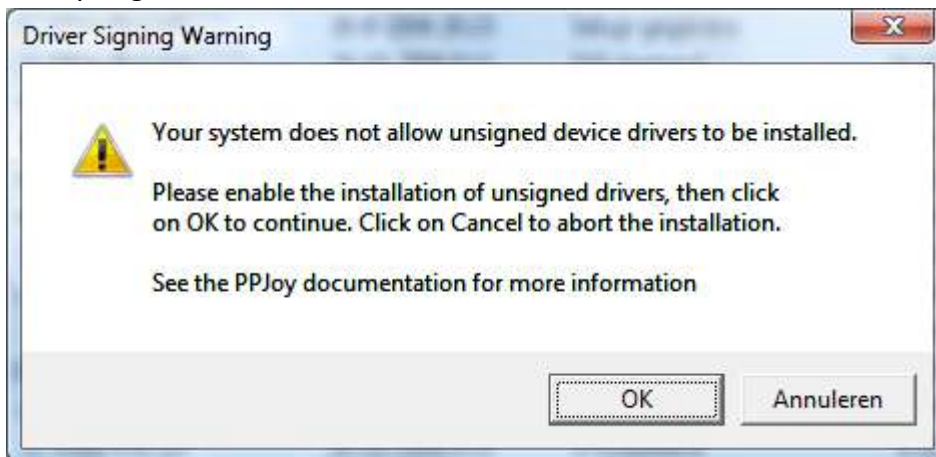
1. Download the latest version of PPJoy x86
2. Once Opened the file you see following contents:



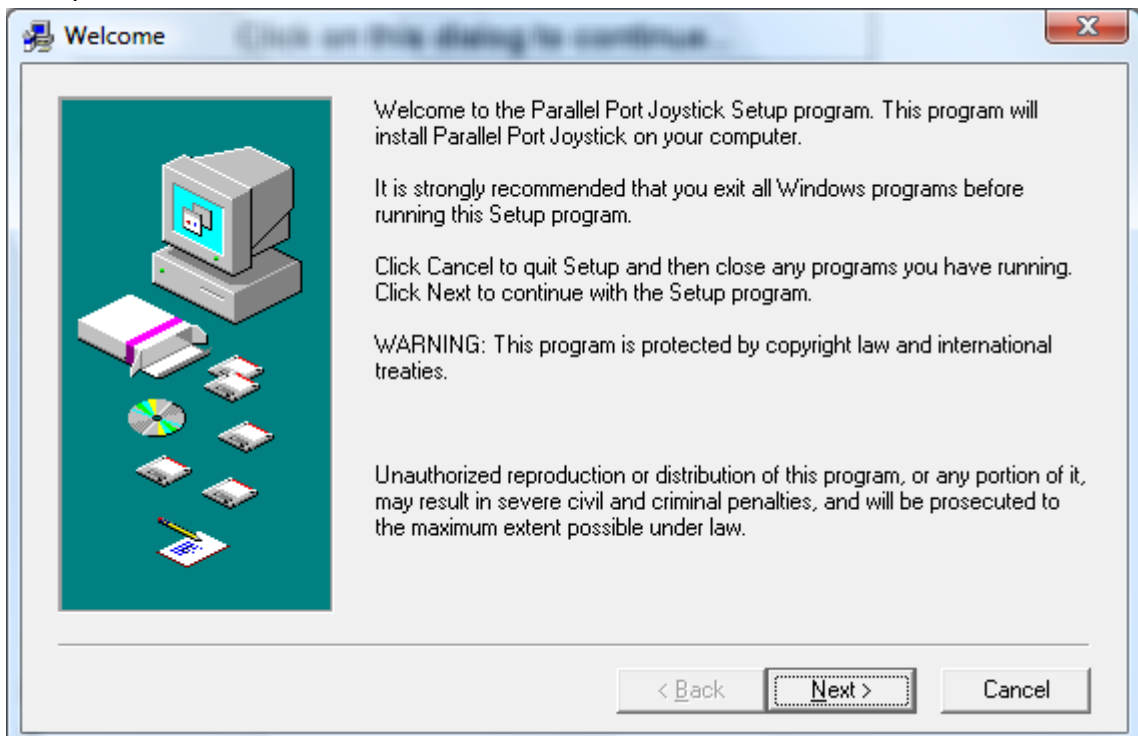
3. Extract the files to a folder on your drive
4. Run Setup.exe



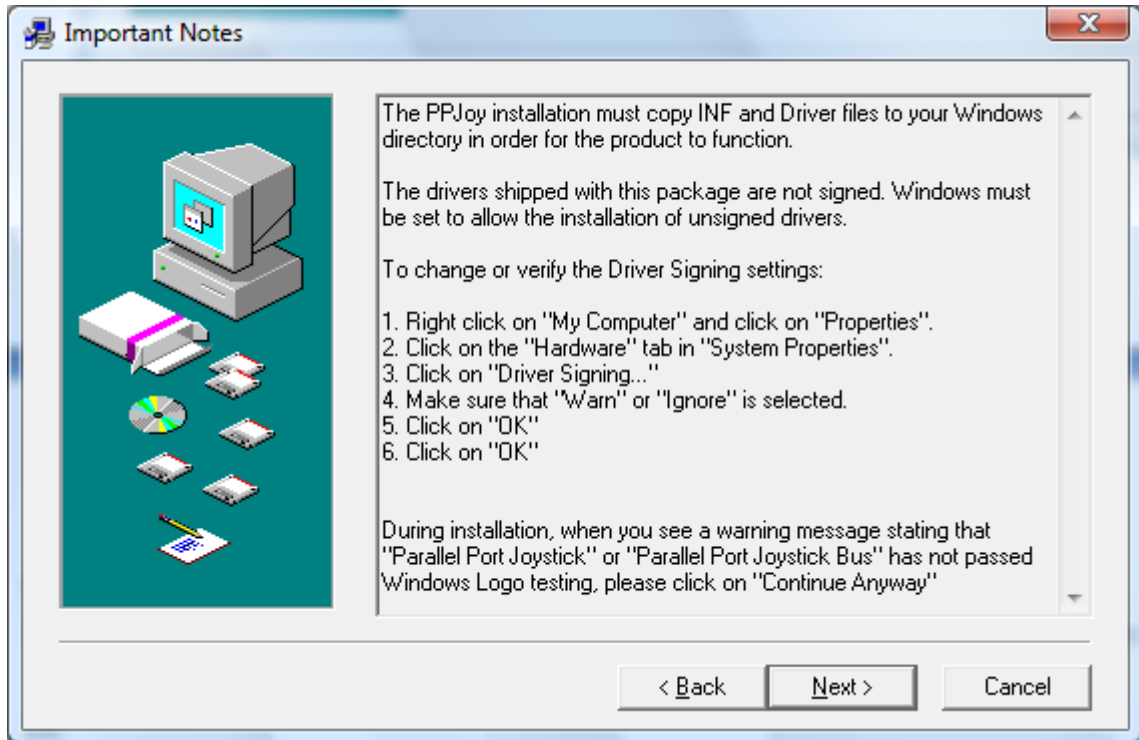
5. Just click anywhere on the logo.
6. Then you get an error:



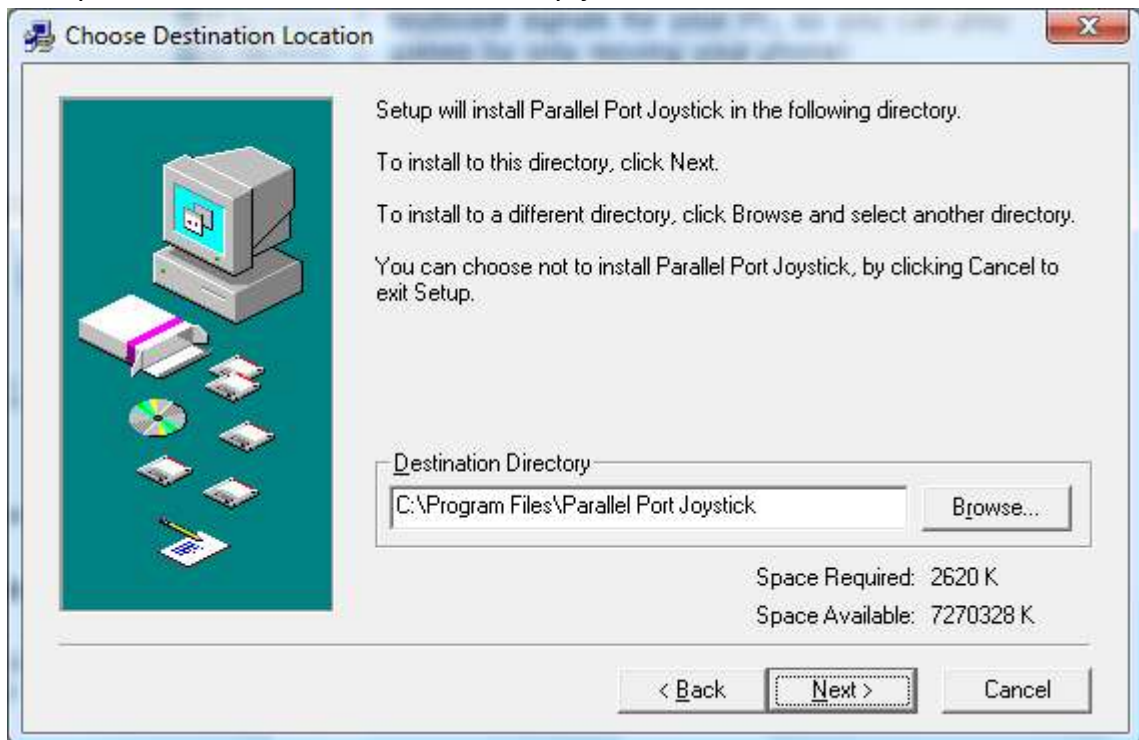
7. Click just on OK this is normal.
8. Now you see the main screen:



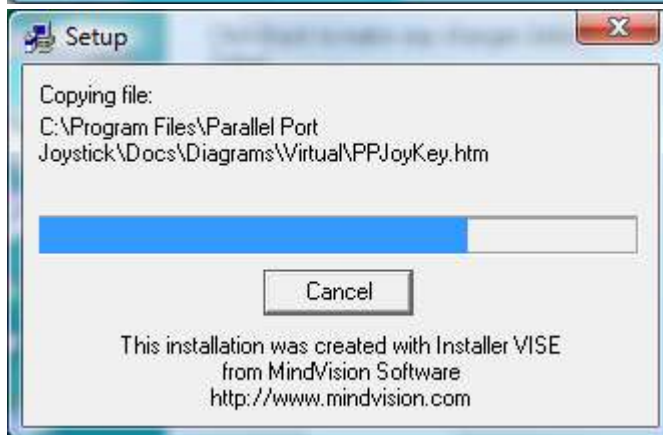
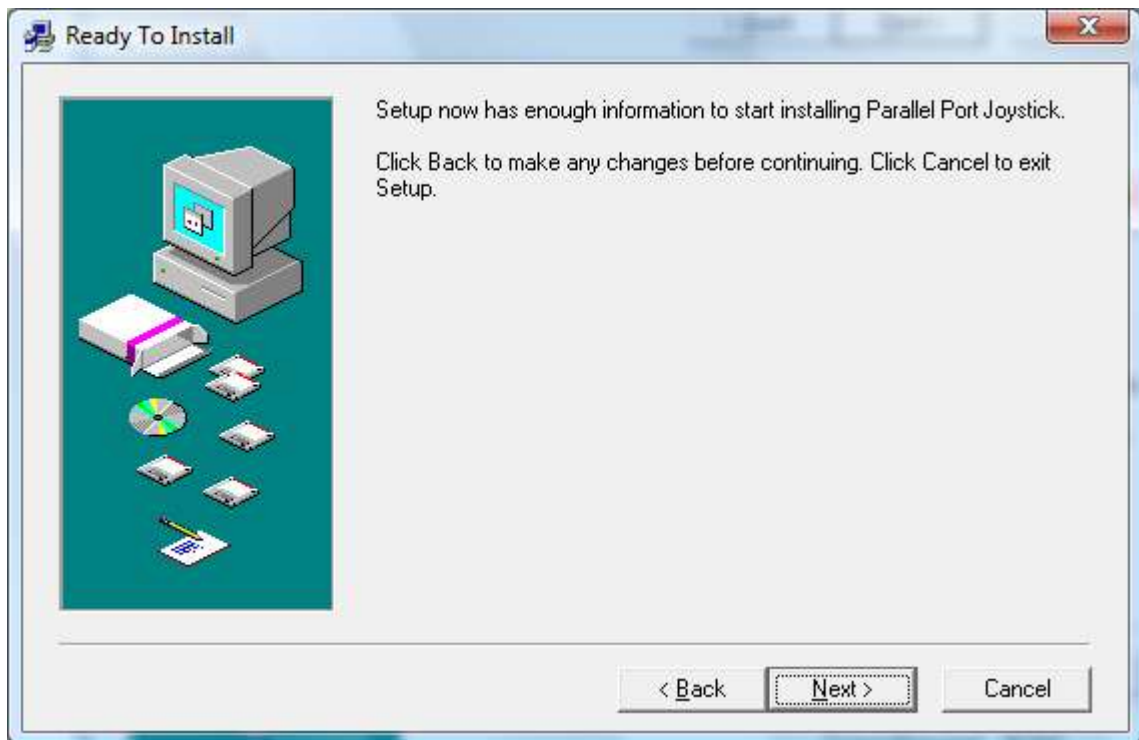
9. Click on Next
10. Then you see a page which describes to disable driver signing, but if you are system administrator it's not needed (non-administrators cannot run the software!)



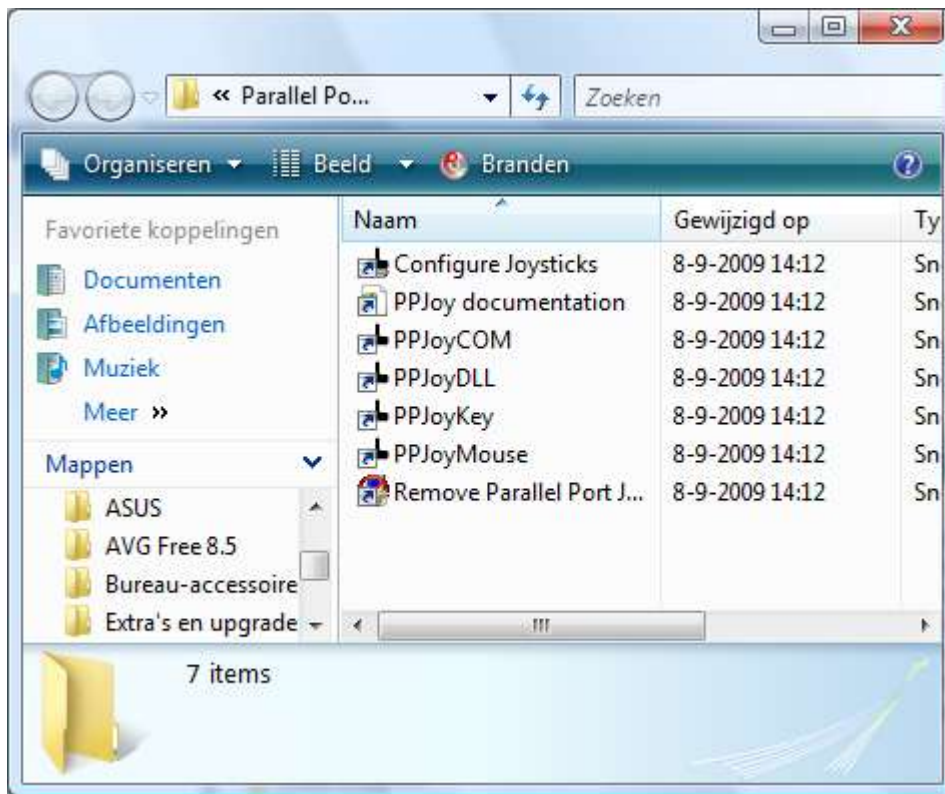
11. Click on Next
12. Then you can choose where to install PPJoy, just use default and click Next



13. Then you can give the folder a name for the start menu, just use default again and click next.
14. Now PPJoy has all information to install the driver, click Next



15. The Setup will after the setup automatically open the start menu with its contents:



16. now go to section "Configuring PPJoy Joysticks"

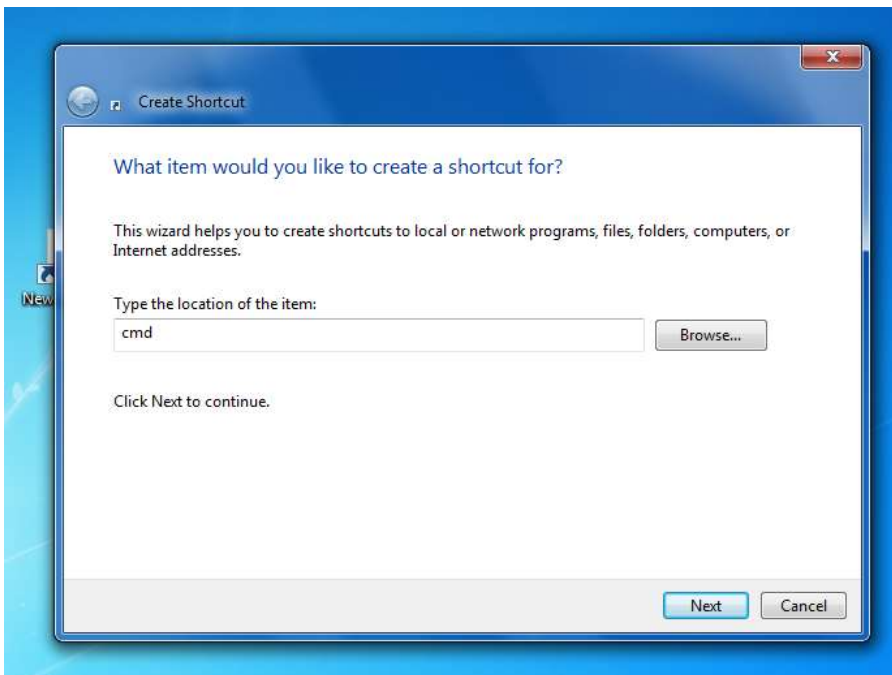
Installing PPJoy (x64):

Installing PPJoy for x64 systems is a little bit complicated:

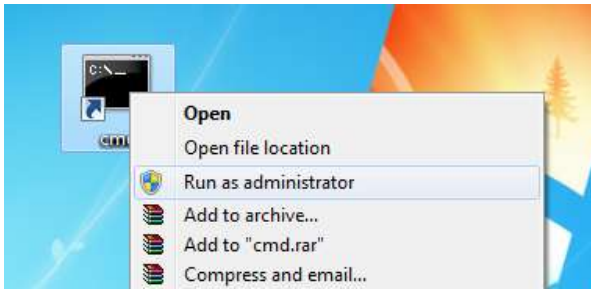
1. Right click on your desktop and choose new -> shortcut:



2. As the location type 'cmd':



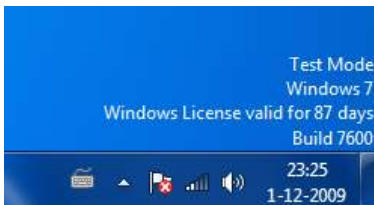
3. Click on next, if you want, give the shortcut a name and choose finish
4. Click on the shortcut and choose 'run as administrator':



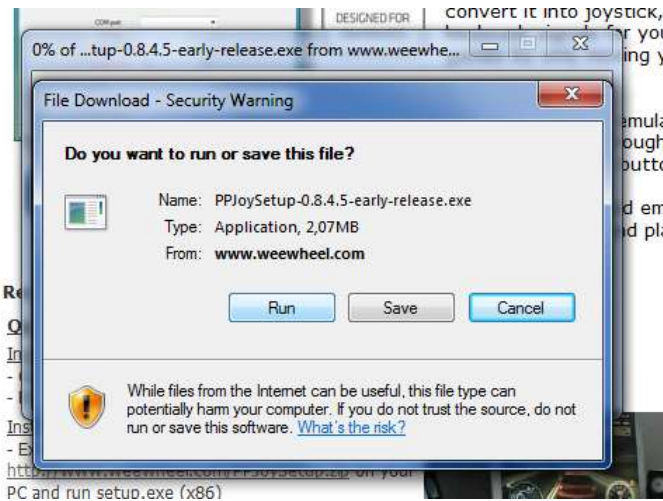
5. It's possible that you get a security warning, click on 'yes'.
6. Now enter following command: 'Bcdedit.exe -set TESTSIGNING ON' and press enter:



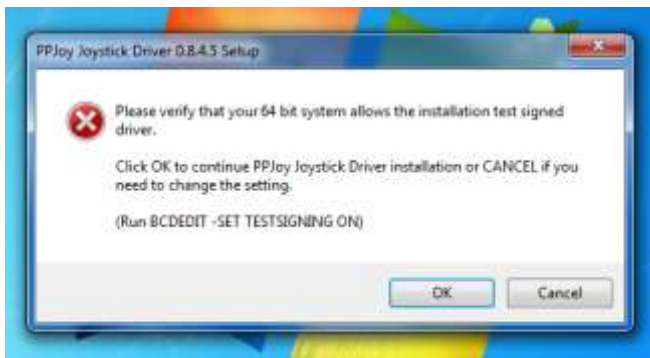
7. Now reboot your system.
8. After reboot, you see 'Test mode' like shown in the screenshot:



9. If not, check if you did correctly the steps above , you can now download PPJoy x64
10. Run the PPJoy installer.



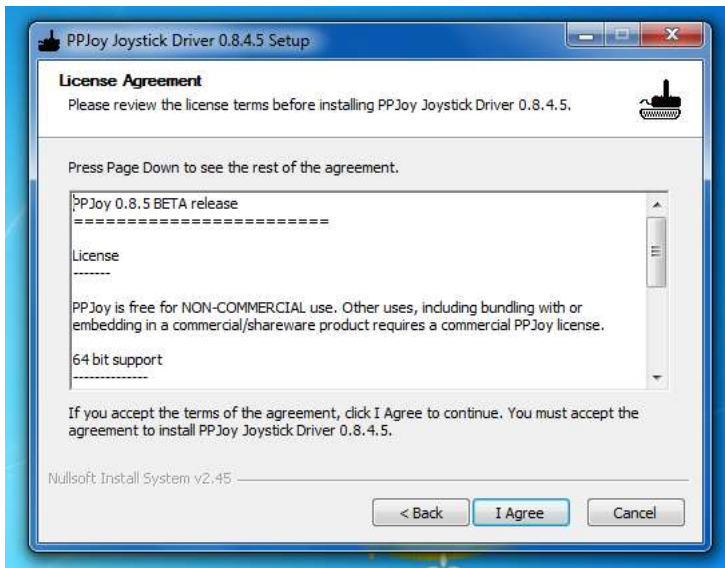
11. PPJoy Setup gives a warning:



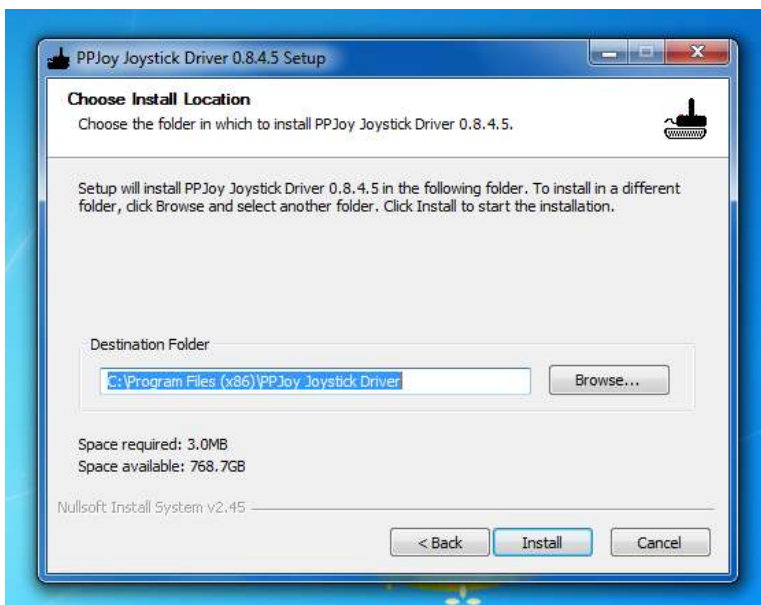
12. We did this before, so just click on 'OK', following screen appears:



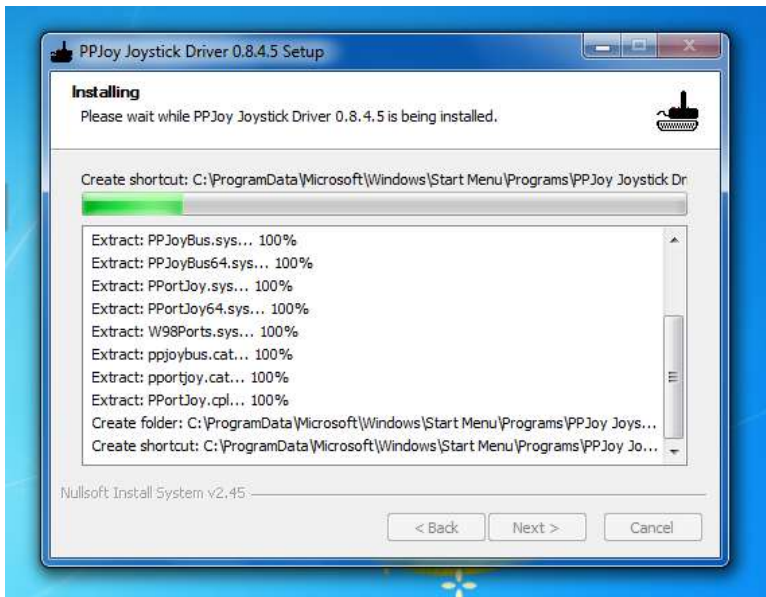
13. Click 'Next', following screen appears:



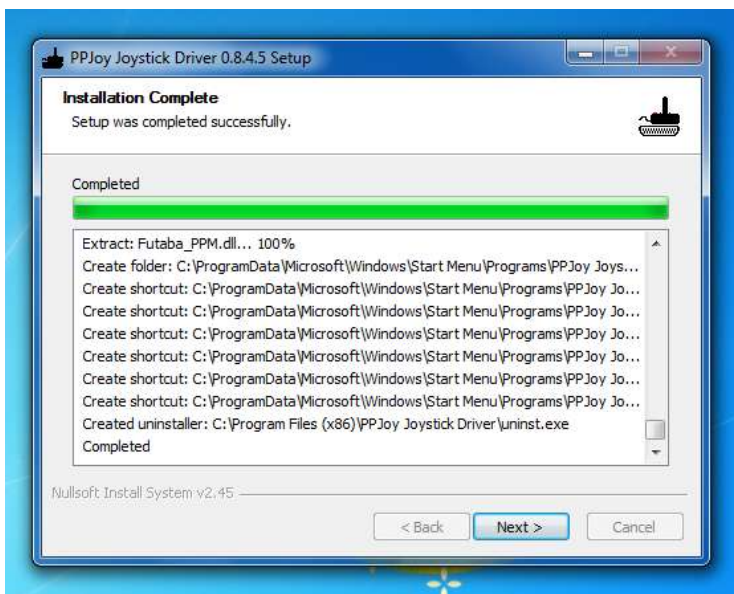
14. Click on 'I Agree', following screen appears:



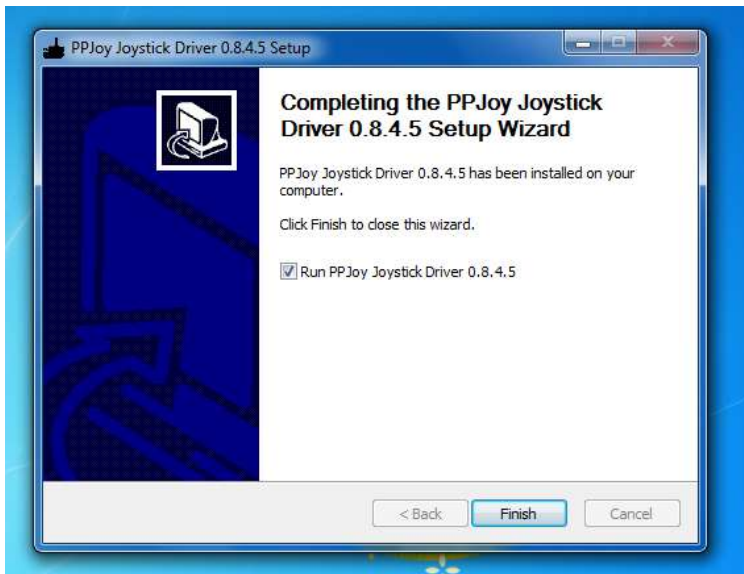
15. Change the location if you want and then click on 'Install'. Following screen appears:



16. Install is busy, after the installation is completed you get following screen:



17. Click on 'Next', following screen appears:



18. Click on Finish, PPJoy is now installed!

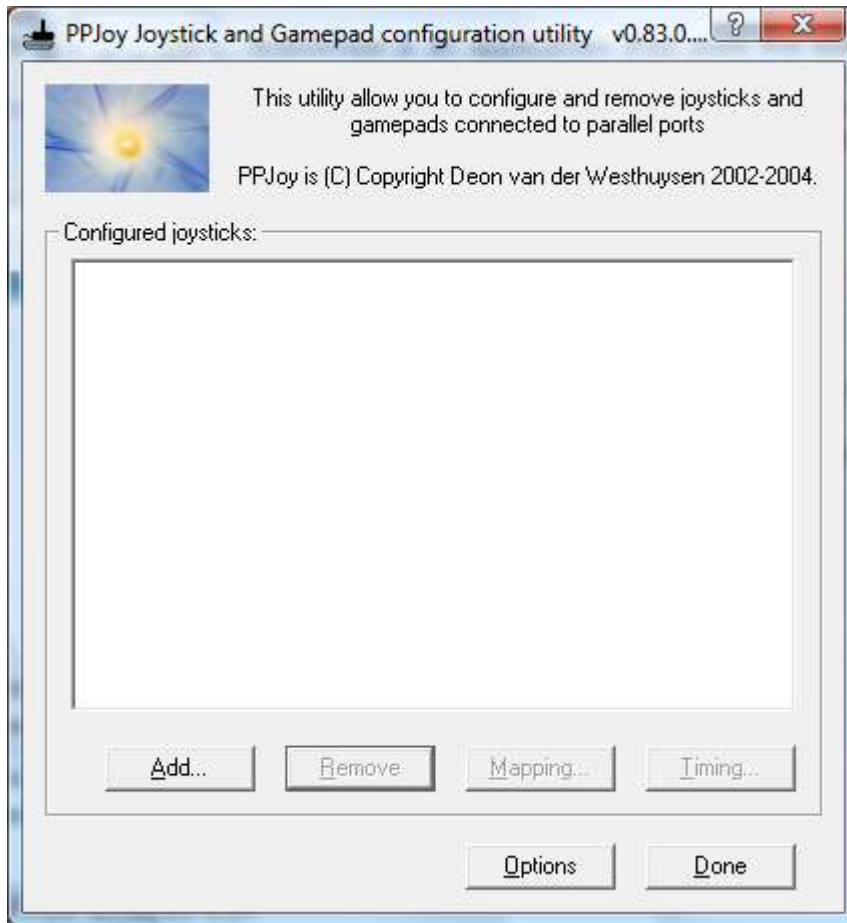
NOTE: if you disable 'Test Mode' even after installation, PPJoy does not function anymore. So you need to have this option always enabled or disable it every time you do not need it.

19. now go to section "Configuring PPJoy Joysticks"

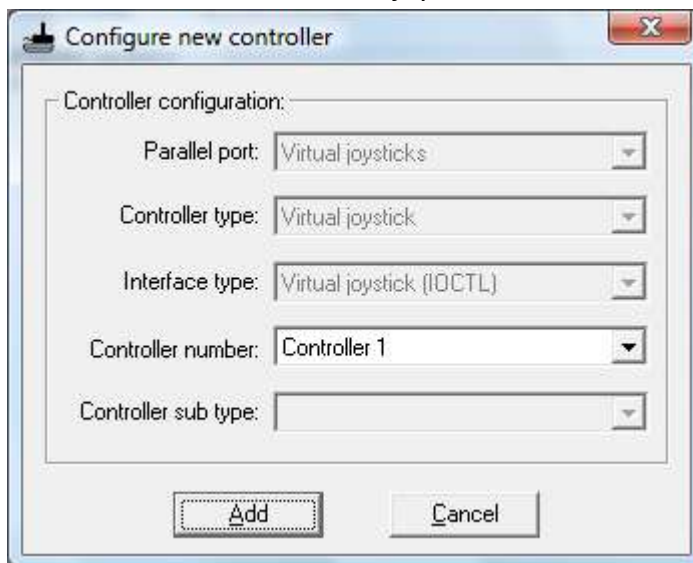
Configuring PPjoy Joysticks:

17. Click the “Configure Joysticks” Shortcut.

18. You get following screen:



19. Now we need to add a virtual joystick, so Click on “Add...”, you get following screen:



20. Make sure that “parallel port” is set to “virtual joysticks” and “controller number” can have any number (as long it’s not above 10) (Please, remind this chosen number!)

21. Click now on “Add”

22. Now you see following screen:



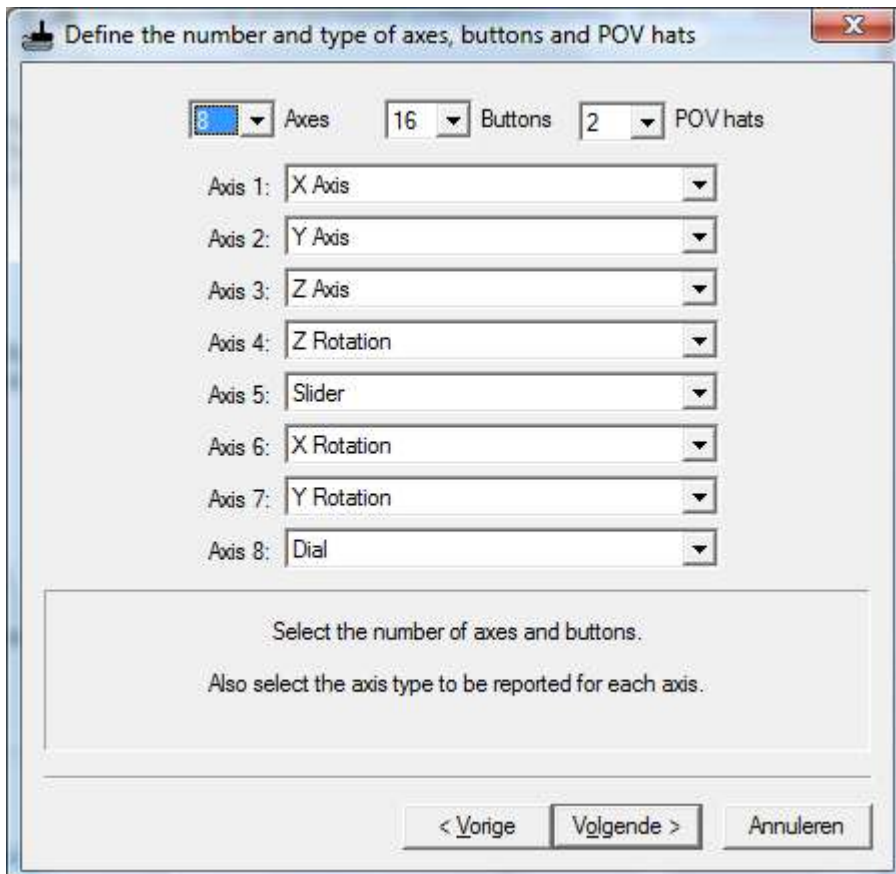
23. Click on the newly created joystick and choose “Mapping”

24. Following screen appears:



25. The option selected is correct, if not choose that option and click Next.

26. Following screen appears

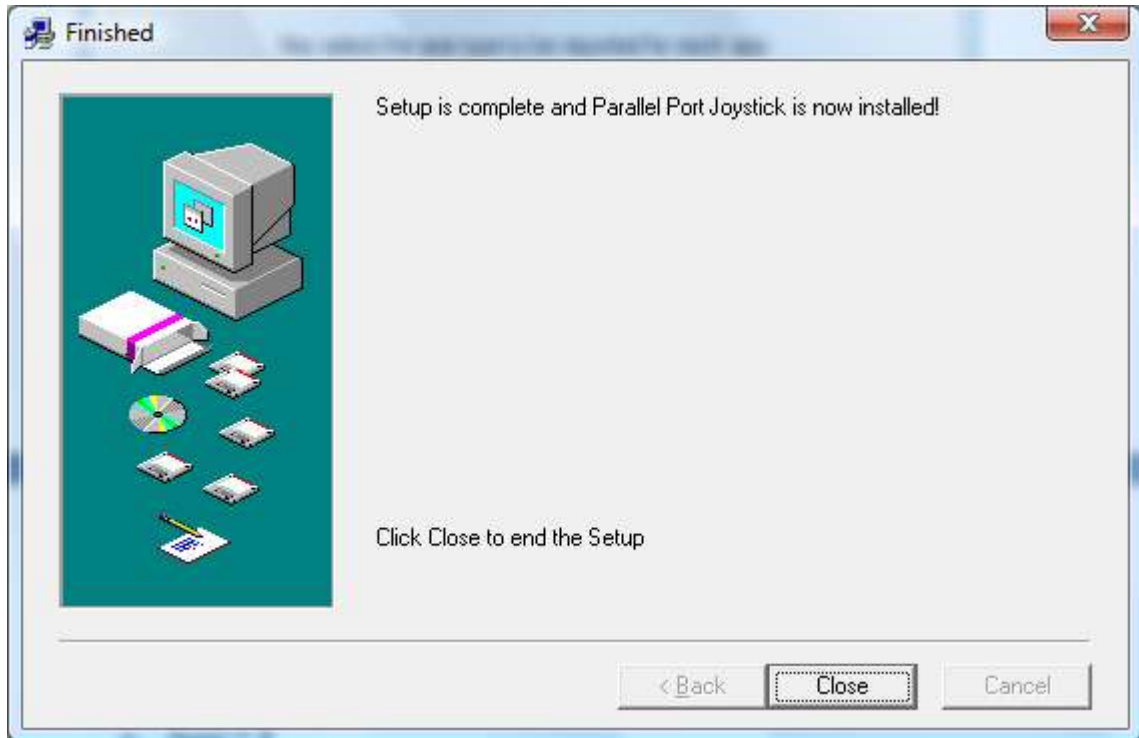


27. Make sure of the following settings:

- a. Axes = 2
- b. Buttons = 0
- c. POV hats = 0

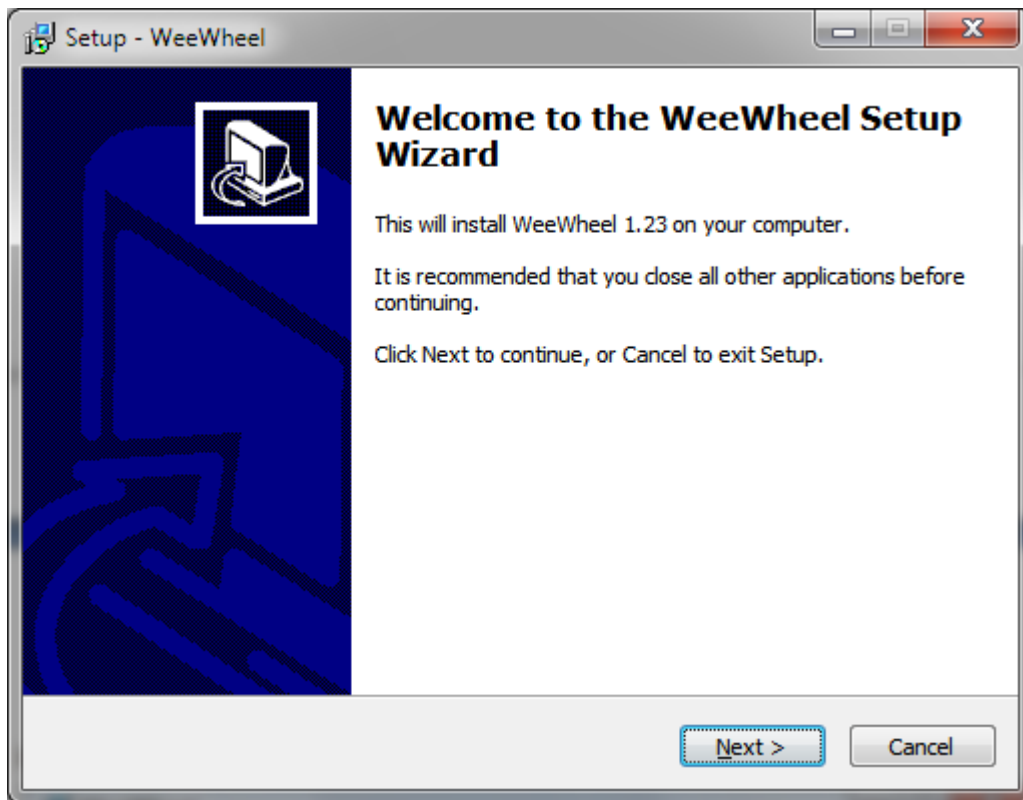
28. And then click 3 times on Next, Finish and then done.

29. Click on Close in the Setup screen



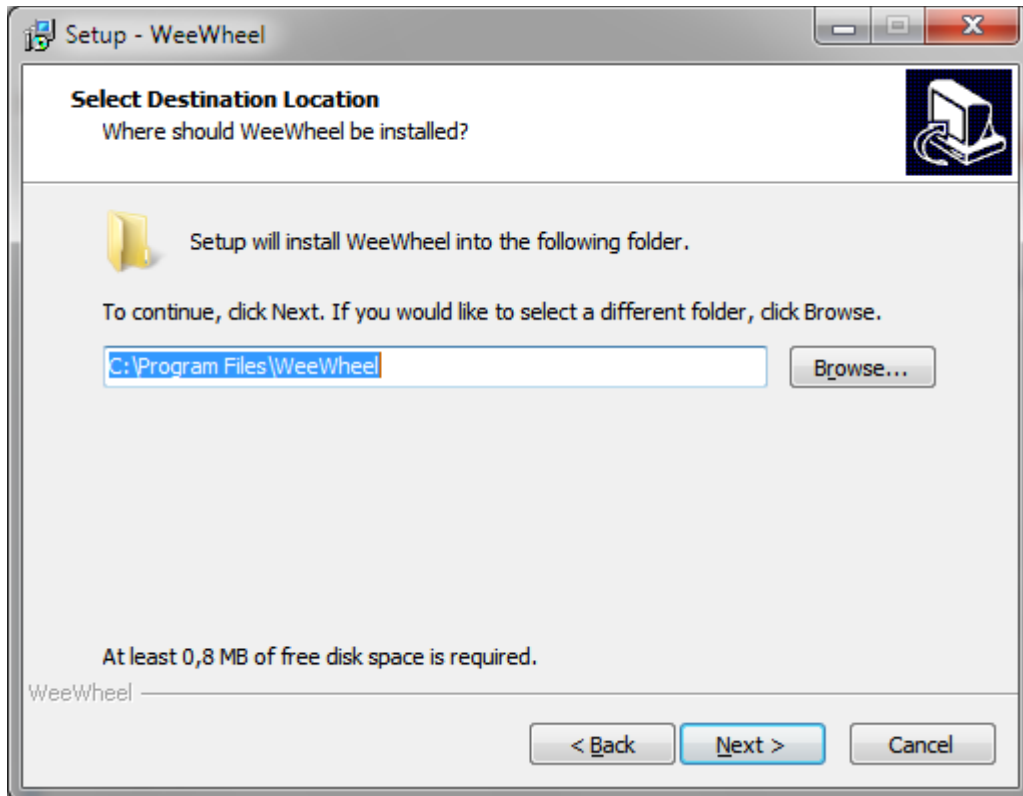
Installing WeeWheel:

1. Go to <http://weewheel.com/en/downloadandroid>
2. Download one of the WeeWheel versions and run it.
3. You get following screen:



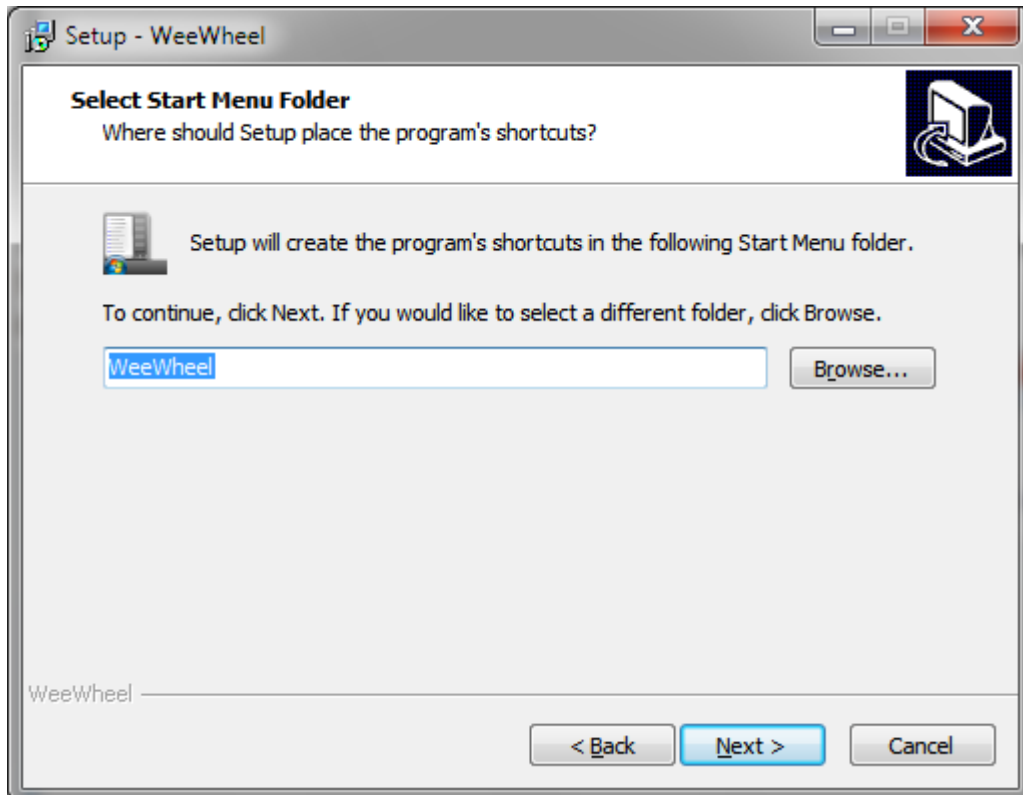
4. Click on "Next >"

5. Following screen appears:



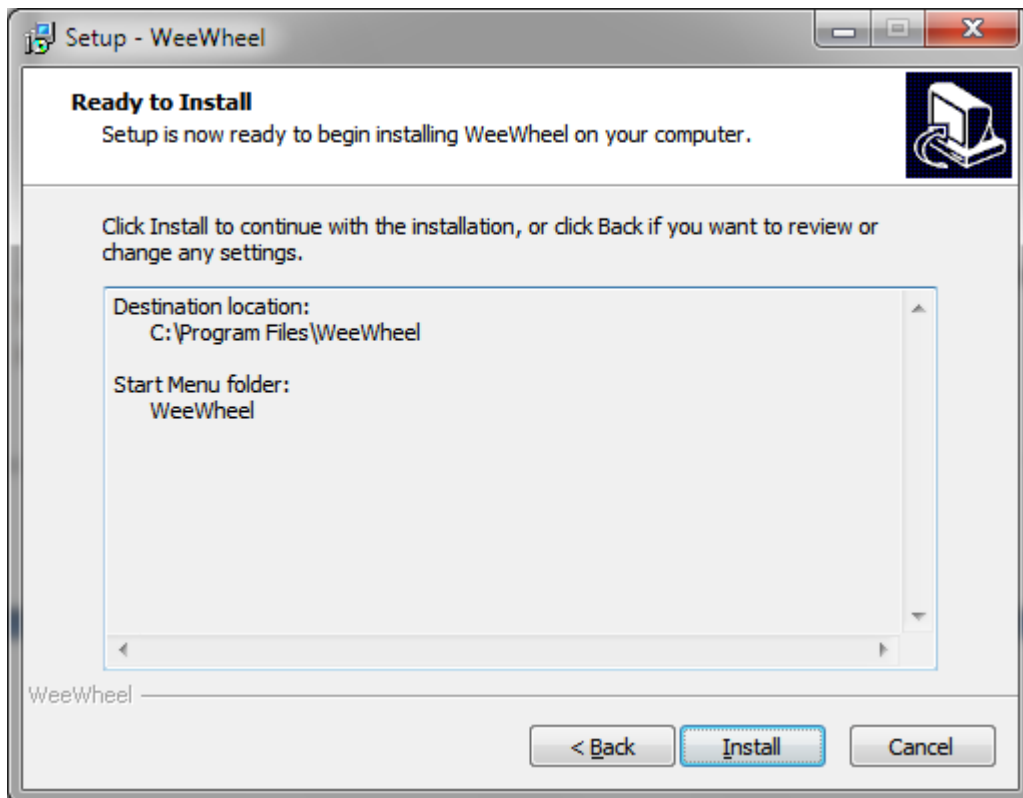
6. Specify the needed settings and click on "Next >"

7. Following screen appears:

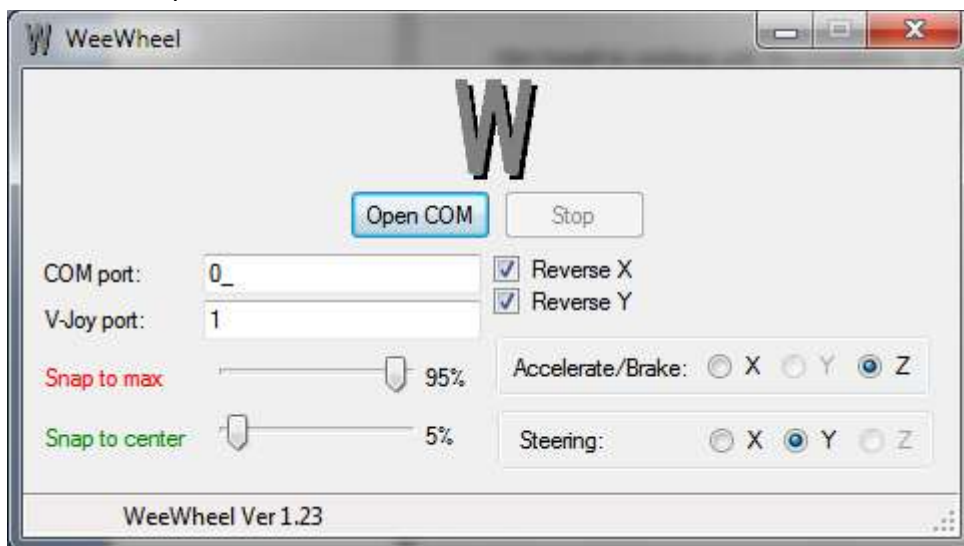


8. Specify the needed settings and click on "Next >"

9. Following screen appears:



10. Click on "Install" the installation process begins.
11. Now open WeeWheel by clicking on "Start" -> "(All) Program's" -> "WeeWheel" -> "WeeWheel"
12. WeeWheel opens:



13. This is the main screen of WeeWheel, see next sections about how to configure Bluetooth and WeeWheel.

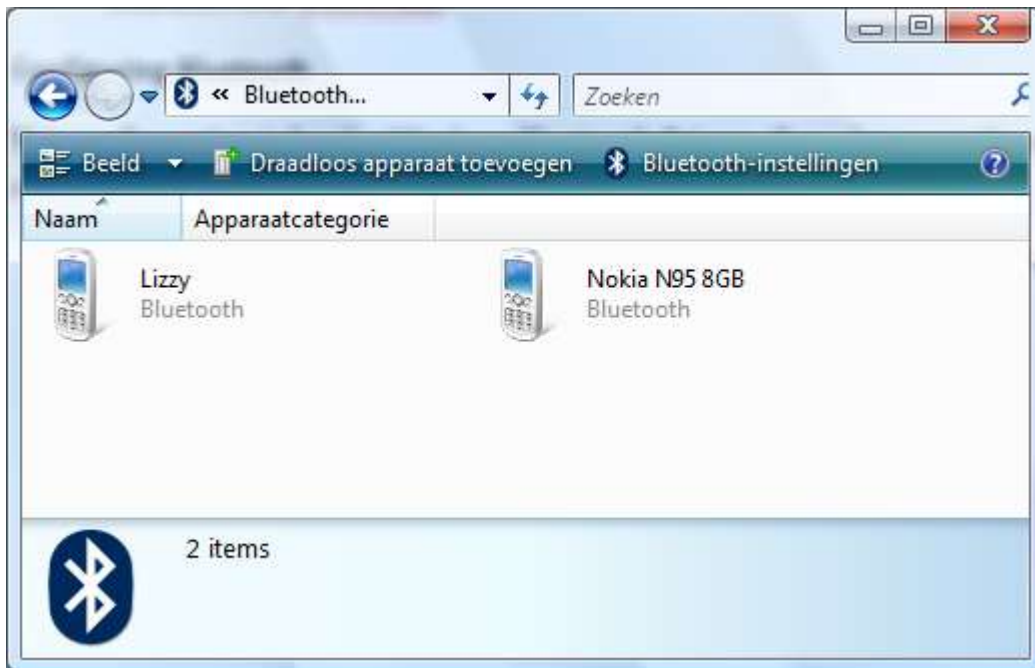
Configuring Bluetooth

This configuration is for the Windows Bluetooth Drivers, if you have another driver, please refer to the manual on how to configure it!

1. Go to the Control Panel of your System and then select Bluetooth Devices



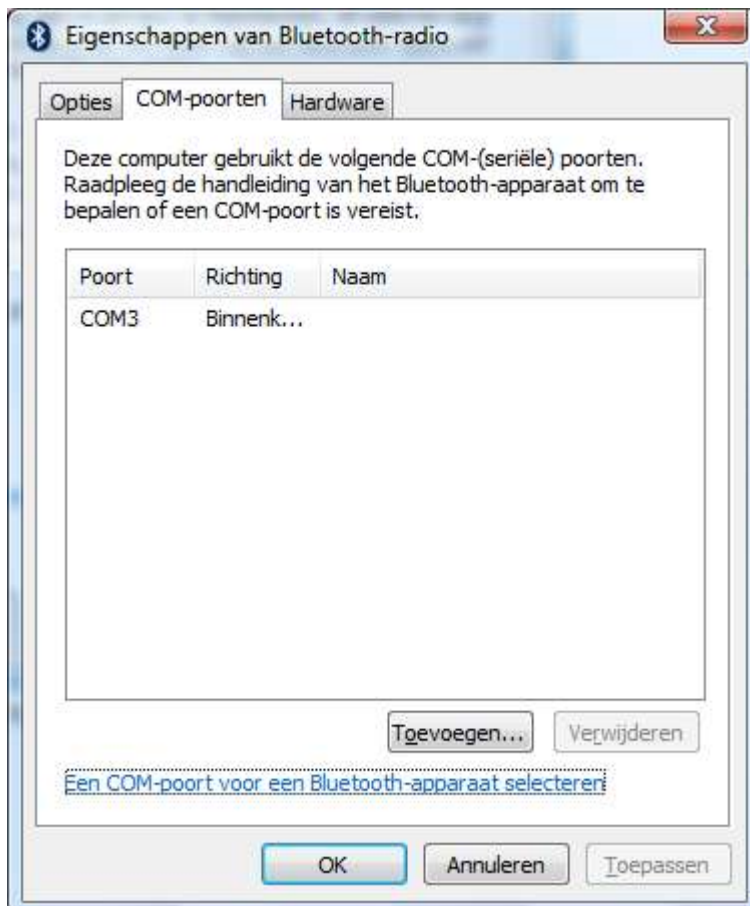
2. Then you get following screen:



3. Click on Bluetooth Settings, following screen appears:



4. Go to COM-ports, Then Following screen appears:



5. If you see already an Incoming COM port, you do not need to do anything!
Remember that COM port number and go to next section.
6. If you do not see an Incoming COM port click on Add, following screen appears:



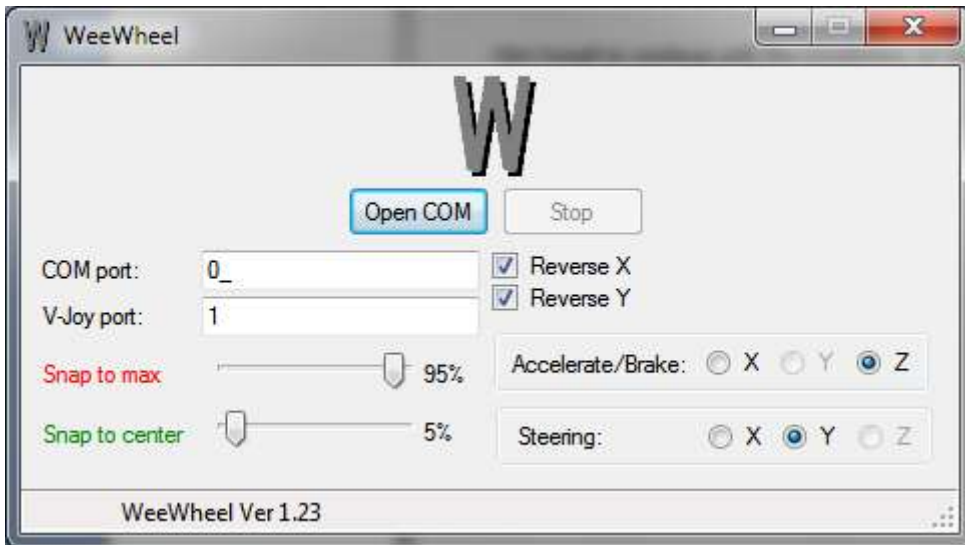
7. Click on OK
8. Now Windows is installing the newly created COM port



9. After that is done you see the new COM port, remember that number (COM 4 in my case) and go to the next section!

Configuring WeeWheel

This is the main screen of WeeWheel:



As you can see it's still empty, follow these steps to configure it properly!

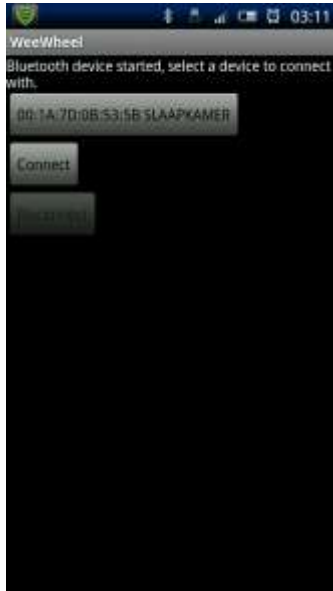
1. Please make sure that the COM Port is set to the COM port you've had to remember in step 5 or 9 of section "**Configuring Bluetooth**"
2. Please make also sure that the V-Joy port is set to the Port you've had to remember in step 20 of section "**Installing PPJoy**"
3. Now you get following screen:



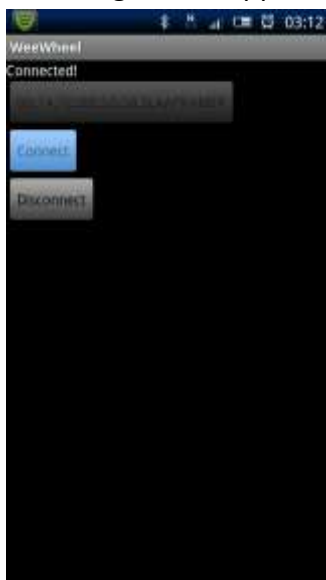
4. Now Click on Open COM, this will open the COM port and set WeeWheel in a listening state.
5. Great, WeeWheel is setup and ready to go.

Running/Connecting Android:

1. Open WeeWheel on your phone, you get following main screen (this can differ on the phone you have)



1. Tap the first button.
2. Select a Bluetooth Device.
3. It can now happen that you need to pair your phone with the PC, this is no problem, just pair. If this step is not working please pair manually and repeat the steps.
4. Following screen appears:



5. Tap connect.
6. When everything is correct you should see the Android started message in WeeWheel.

Setting up the accelerometer

1. Now you need to choose the ax that will be used for accelerating and steering. Choose the correct ax, to see if you have the correct ax do the following:
 - a. Open the start menu
 - b. Type in the search box “Game” or your own language translation of it.
 - c. Choose the highlighted item.



- d. Double click on the PPJoy entry.
- e. Choose the second tab.
- f. Chose an ax in WeeWheel.
- g. Check if the cursor moves left if you steer left, and right if you steer right.
- h. Check if the cursor moves left if you steer up, and right if you steer down.
- i. If not, choose another ax and repeat b and c.
- j. Use the reverse checkboxes if the cursor moves to the wrong direction.

FAQ:

Q: I'm getting following error: 'Error: There was a communication error with the joystick device!'

A: The PPJoy driver is not found, did you install it (correct)?

Q: I'm getting following error: 'Error: There was a problem opening the joystick device!'

A: Make sure the selected V-Joy port exist in the PPJoy configuration panel as virtual joystick port.

Q: WeeWheel is very slow!

A: Close WeeWheel, Close the Android app, sometimes it can happen that there are 2 or 3 connections open to the phone, which makes it very slow.