



WeeWheel

Ver. 1.20

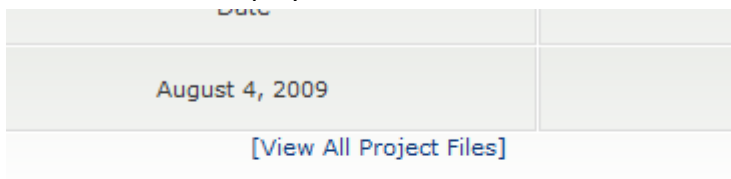
Index:

Installing Python:.....	3
Installing PPJoy (x86):.....	5
Installing PPJoy (x64):.....	10
Configuring PPjoy Joysticks:	16
Installing WeeWheel:	19
Configuring Bluetooth	22
Configuring WeeWheel	25
Running/Connecting Python:	28
Fine-tune WeeWheel	29
Setting up the accelerometer.....	29
Setting up Keyboard emulation:.....	33
Setting up Mouse emulation:.....	34
Setting Joystick Emulation.....	35
Using Configuration files	36
WeeWheel and Touch devices:.....	38
Scripting guidelines:	42
Feeding WeeWheel:	42
FAQ:	43

Installing Python:

Before WeeWheel can be used, the Python Core and Python Script shell needs to be installed. You can do this by following these steps:

1. Click on following link: <https://garage.maemo.org/projects/pys60/>.
2. You now get on the website of garage.maemo.org
3. Click on the link displayed below:



4. Download the latest Python version:

[1.9.7](#)

[OpenC 3 0 SDK plugin.zip](#)

[openssl-0.9.7f.tar](#)

[pys60-1.9.7_src.zip](#)

[Python 1.9.7 3rdFP1 SDK with OpenC.zip](#)

[Python 1.9.7 3rdFP2 SDK with OpenC.zip](#)

[PythonForS60 1.9.7 Setup.exe](#)

[PythonForS60 1.9.7.tar.gz](#)

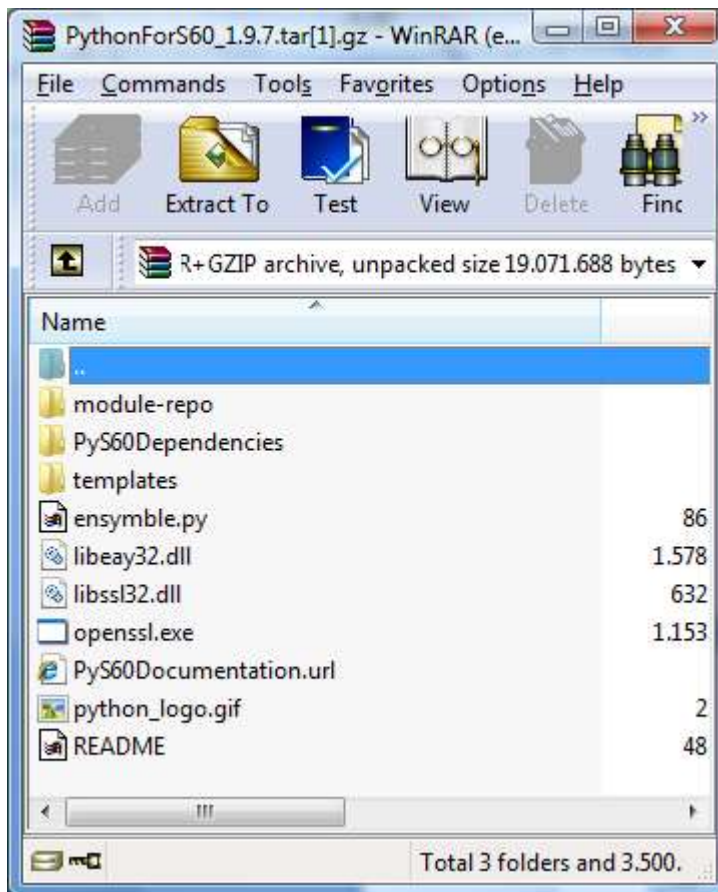
[PythonScriptShell 1.9.7 unsigned devcert.sis](#)

[release notes 1.9.7.txt](#)

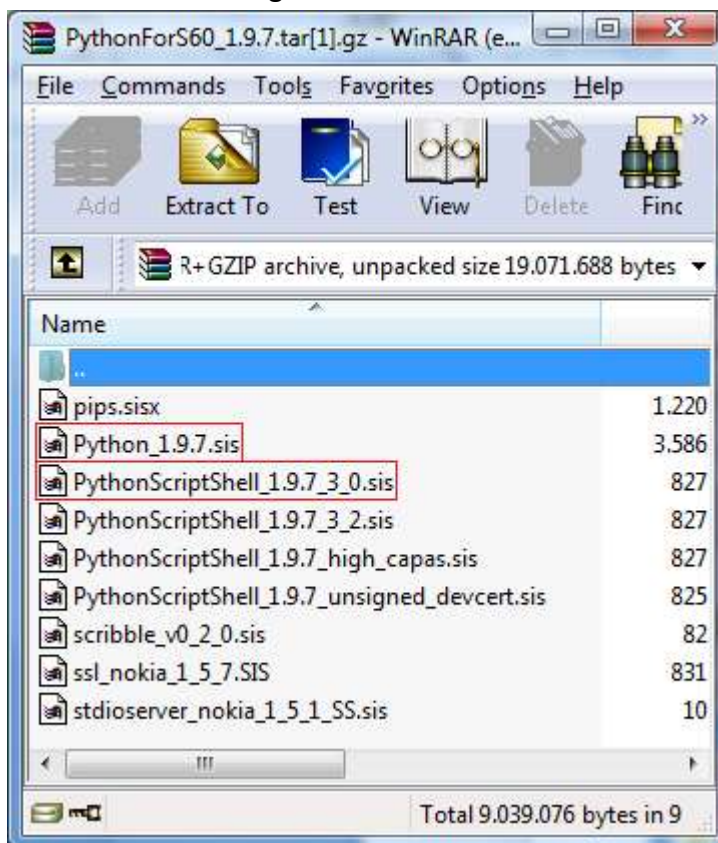
5. Once Opened the file you see following contents:



6. Open then this folder
7. You see following contents:



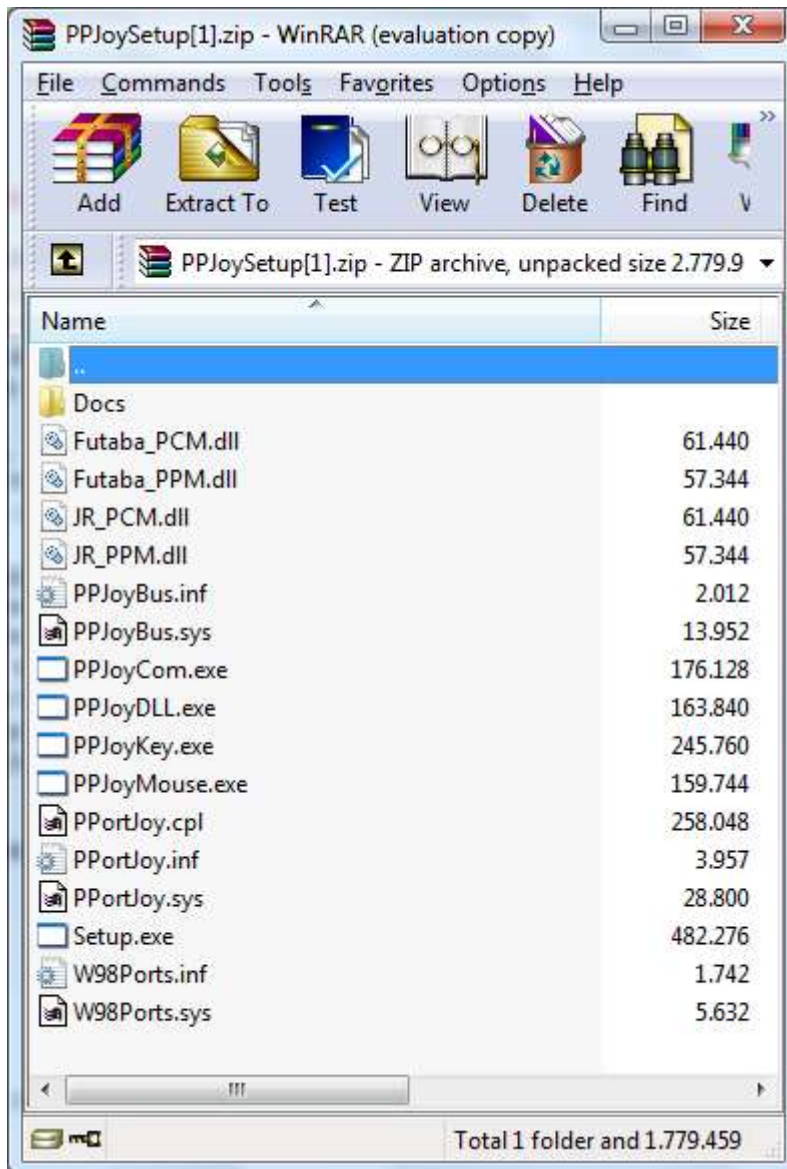
8. Open then PyS60Dependencies
9. You will see following contents:



10. Extract the files which are rounded with a red line
11. Then send these files to your phone and install (default settings)

Installing PPJoy (x86):

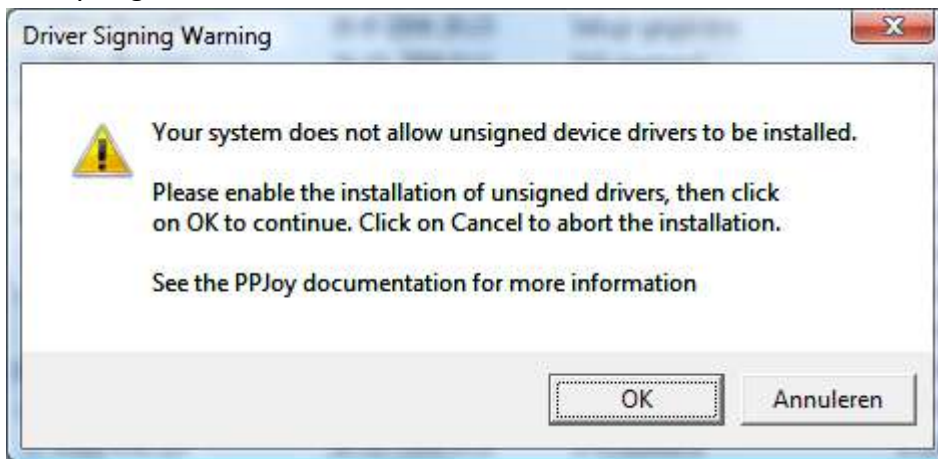
1. Click on following link: <http://www.weewheel.com/PPJoySetup.zip>
2. Once Opened the file you see following contents:



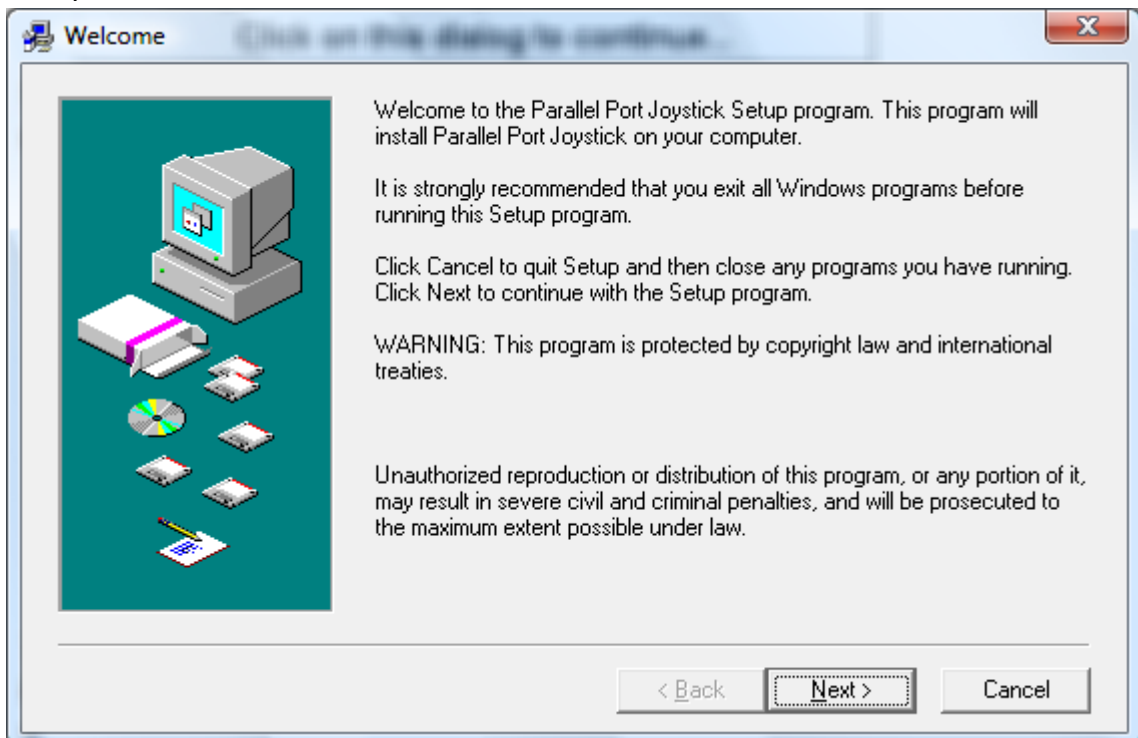
3. Extract the files to a folder on your drive
4. Run Setup.exe



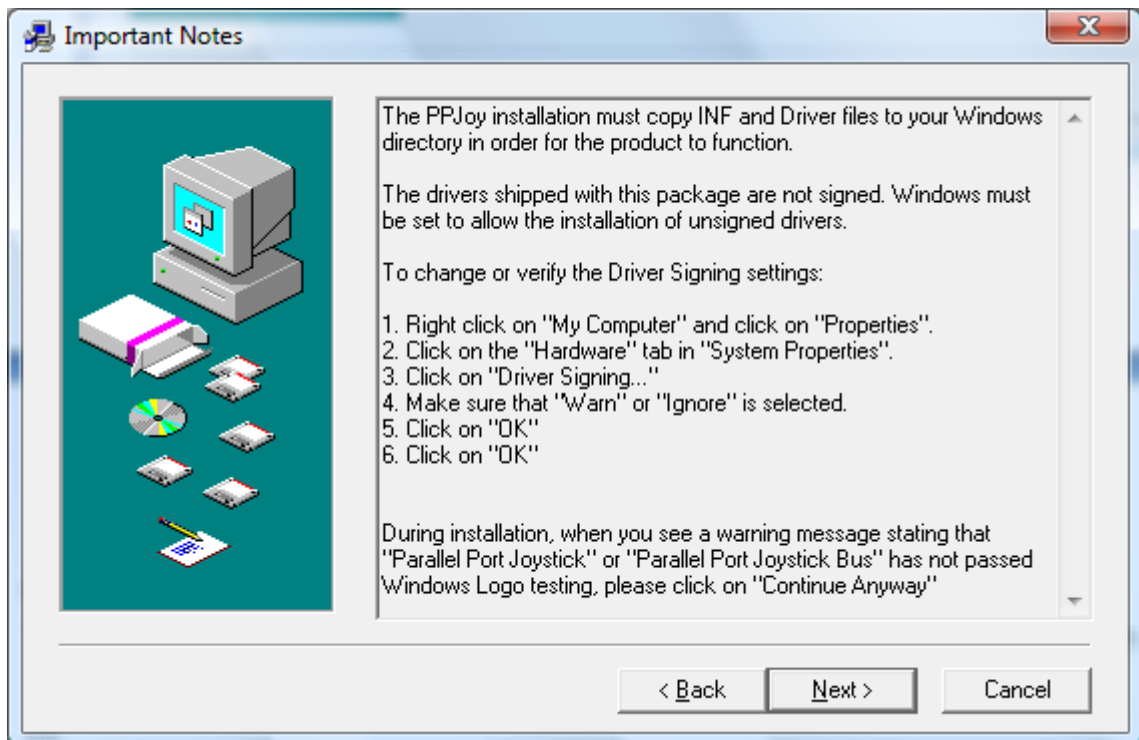
5. Just click anywhere on the logo.
6. Then you get an error:



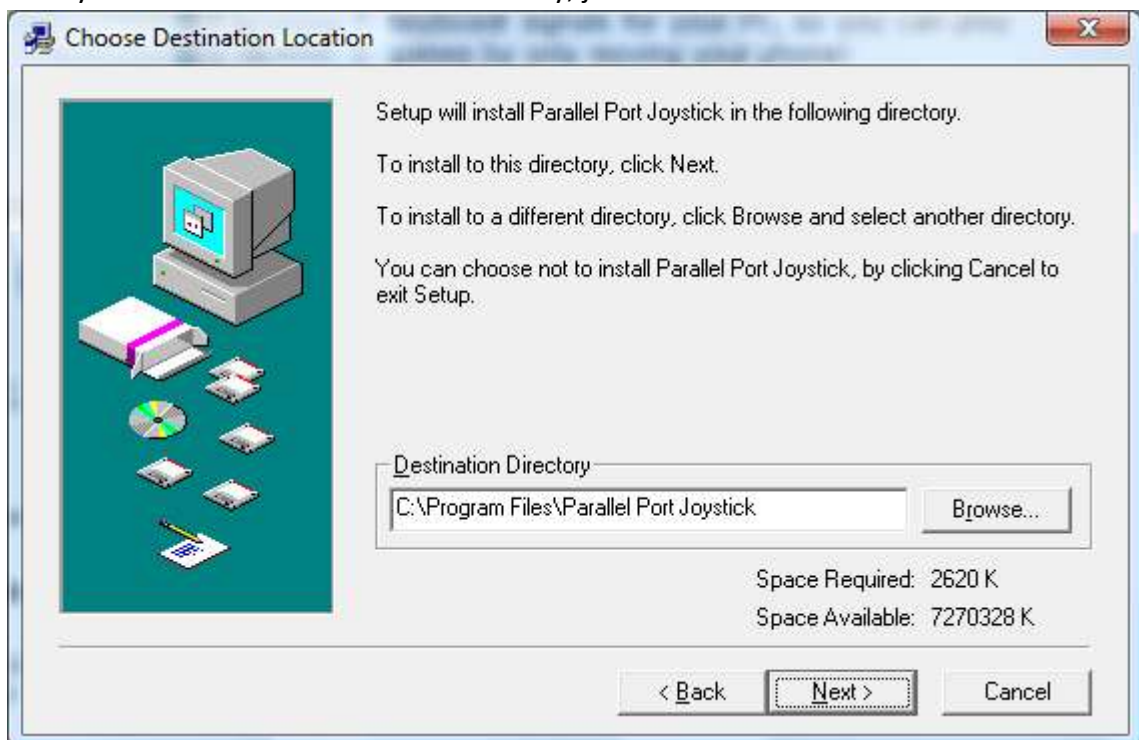
7. Click just on OK this is normal.
8. Now you see the main screen:



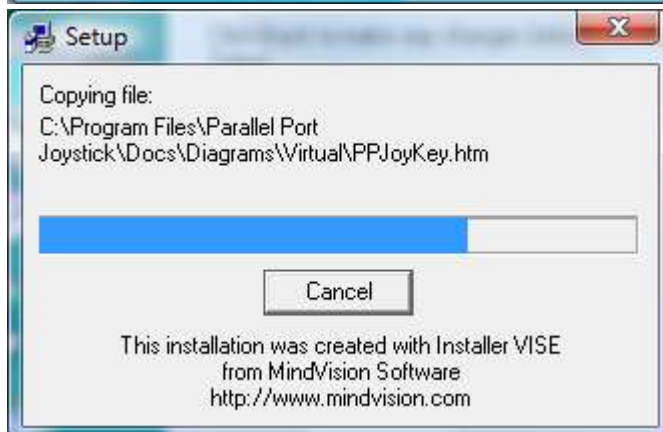
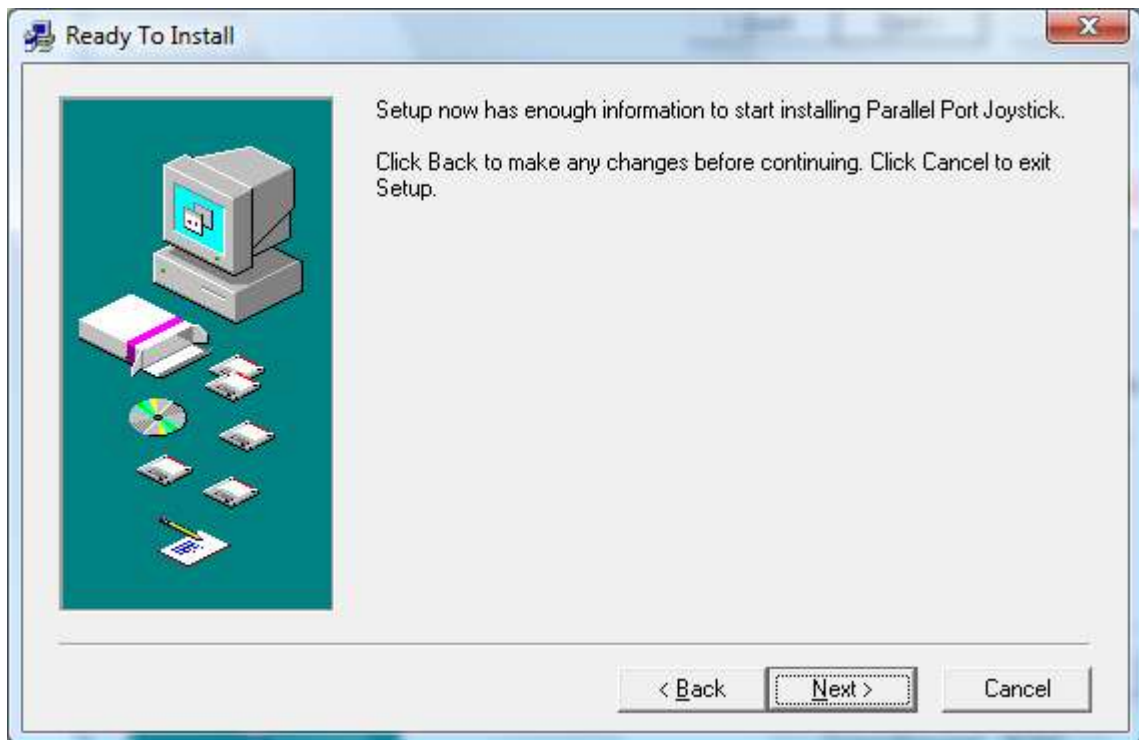
9. Click on Next
10. Then you see a page which describes to disable driver signing, but if you are system administrator it's not needed (non-administrators cannot run the software!)



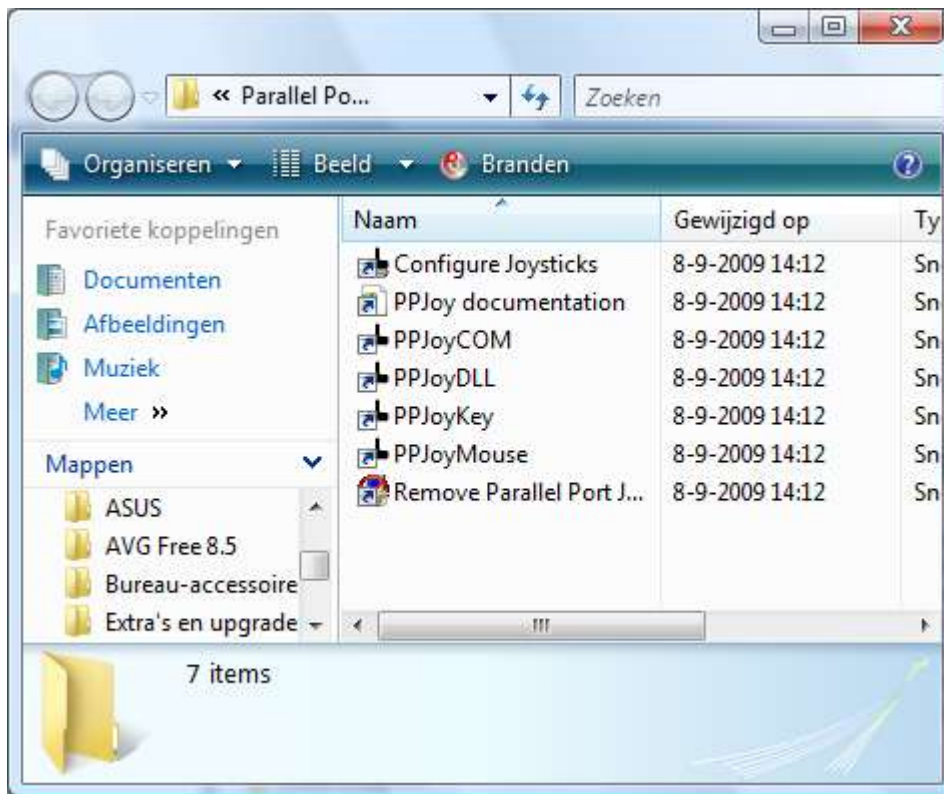
11. Click on Next
12. Then you can choose where to install PPJoy, just use default and click Next



13. Then you can give the folder a name for the start menu, just use default again and click next.
14. Now PPJoy has all information to install the driver, click Next



15. The Setup will after the setup automatically open the start menu with its contents:

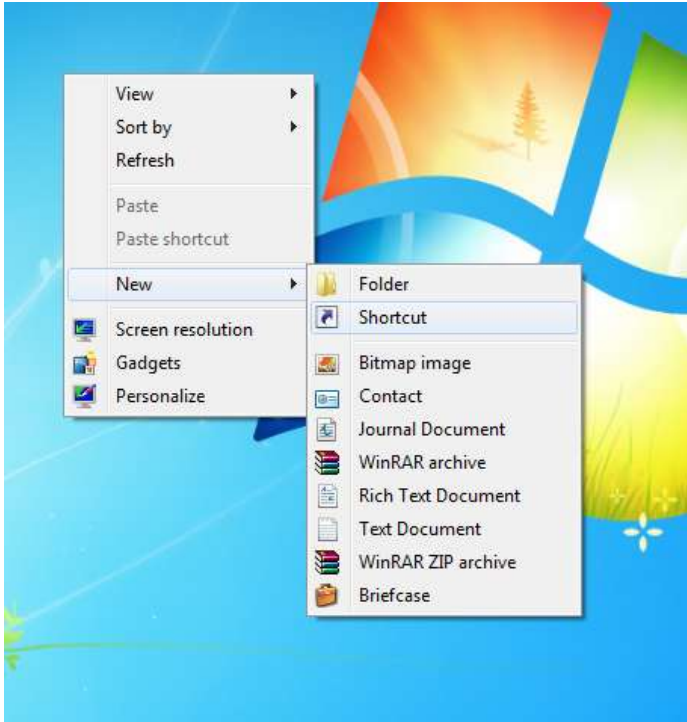


16. now go to section "Configuring PPJoy Joysticks"

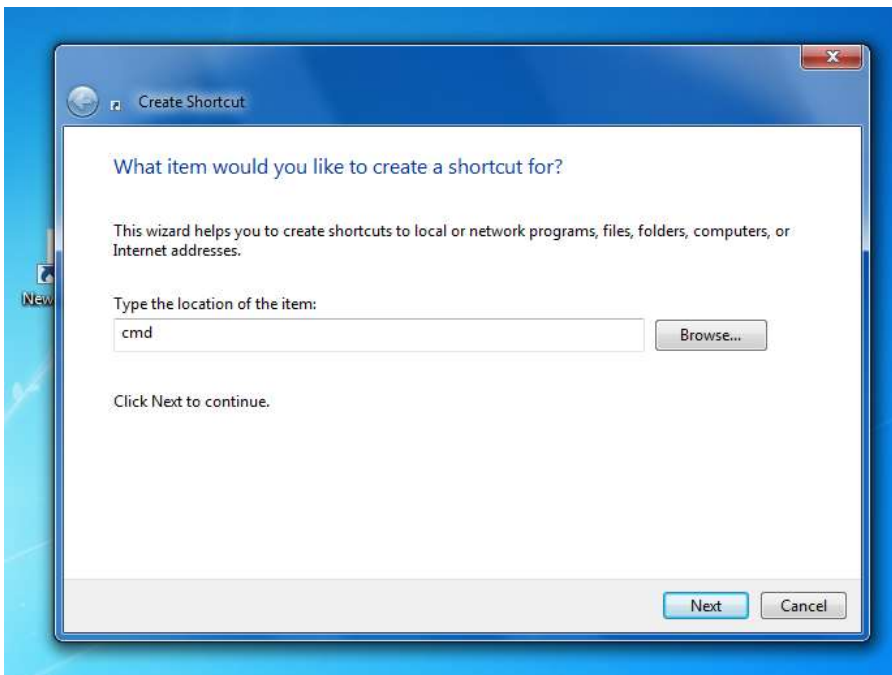
Installing PPJoy (x64):

Installing PPJoy for x64 systems is a little bit complicated:

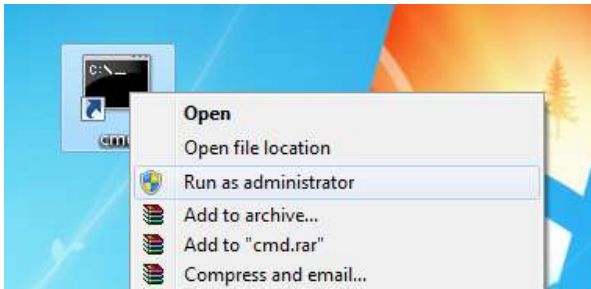
1. Right click on your desktop and choose new -> shortcut:



2. As the location type 'cmd':



3. Click on next, if you want, give the shortcut a name and choose finish
4. Click on the shortcut and choose 'run as administrator':



5. It's possible that you get a security warning, click on 'yes'.
6. Now enter following command: 'Bcdedit.exe -set TESTSIGNING ON' and press enter:



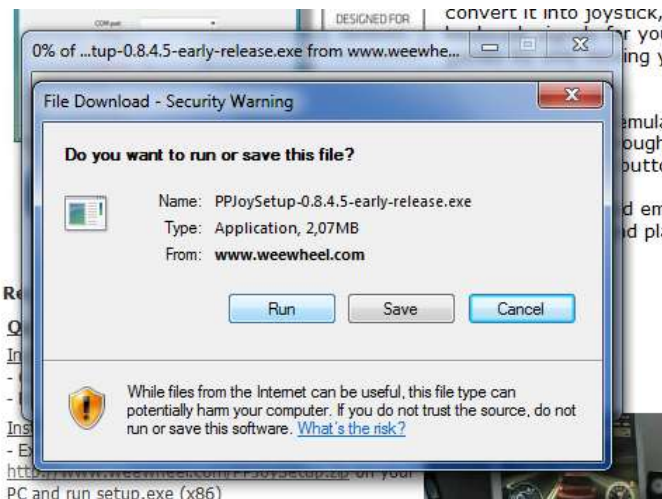
7. Now reboot your system.
8. After reboot, you see 'Test mode' like shown in the screenshot:



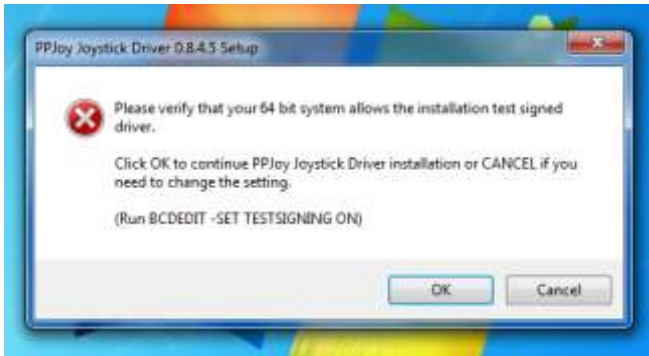
9. If not, check if you did correctly the steps above , you can now download PPJoy from following link: <http://www.weewheel.com/PPJoySetup-0.8.4.5-early-release.exe>



10. You get a download screen, choose 'run'



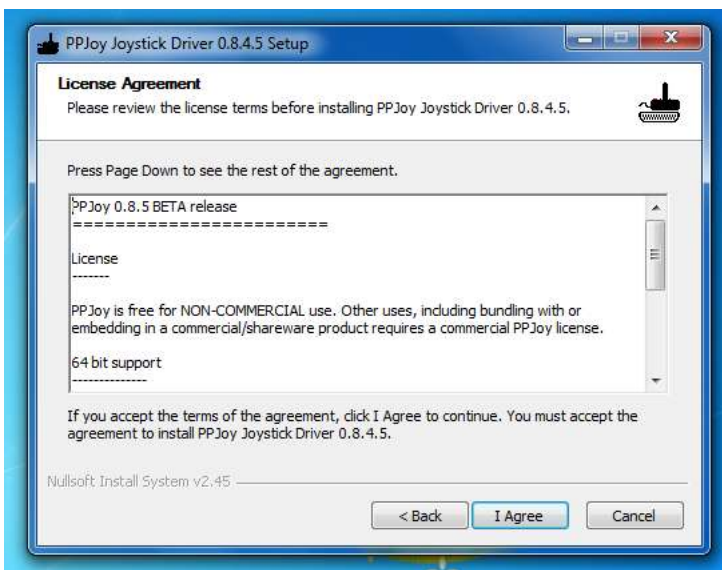
11. After downloading is complete, PPJoy Setup gives a warning:



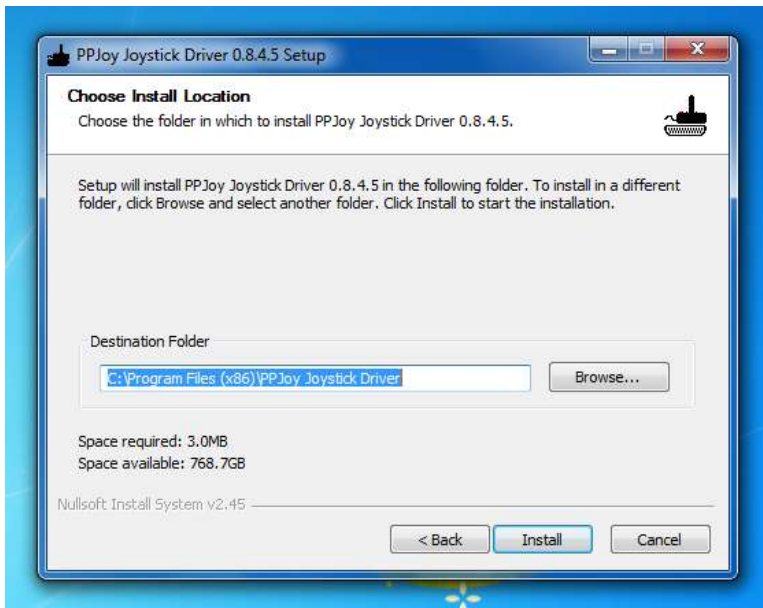
12. We did this before, so just click on 'OK', following screen appears:



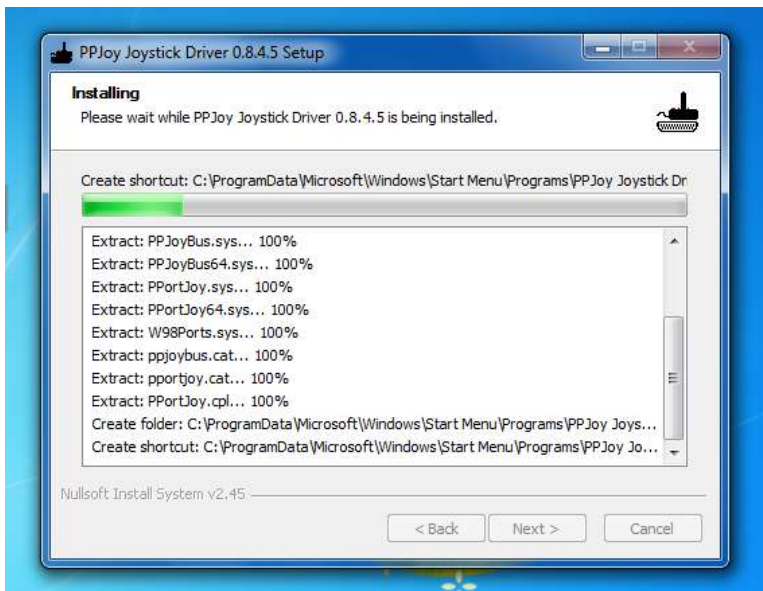
13. Click 'Next', following screen appears:



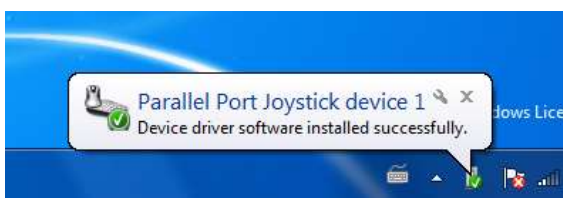
14. Click on 'I Agree', following screen appears:

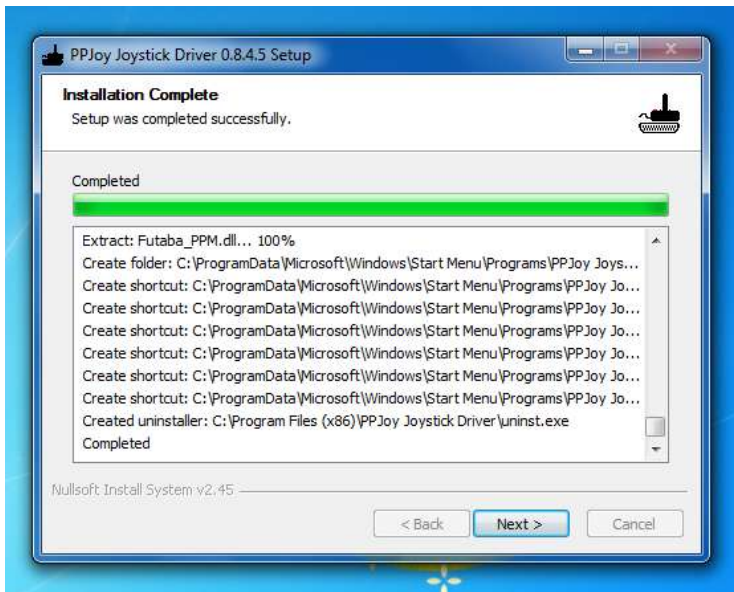


15. Change the location if you want and then click on 'Install'. Following screen appears:

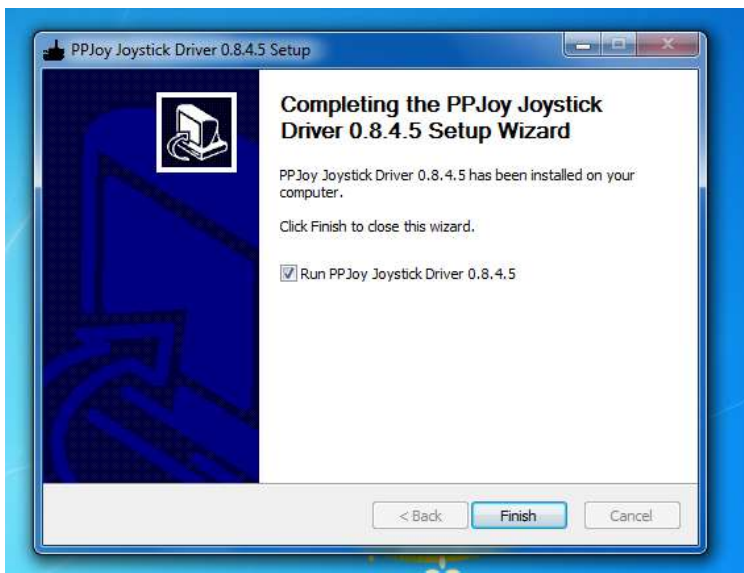


16. Install is busy, after the installation is completed you get following screen:





17. Click on 'Next', following screen appears:



18. Click on Finish, PPJoy is now installed!

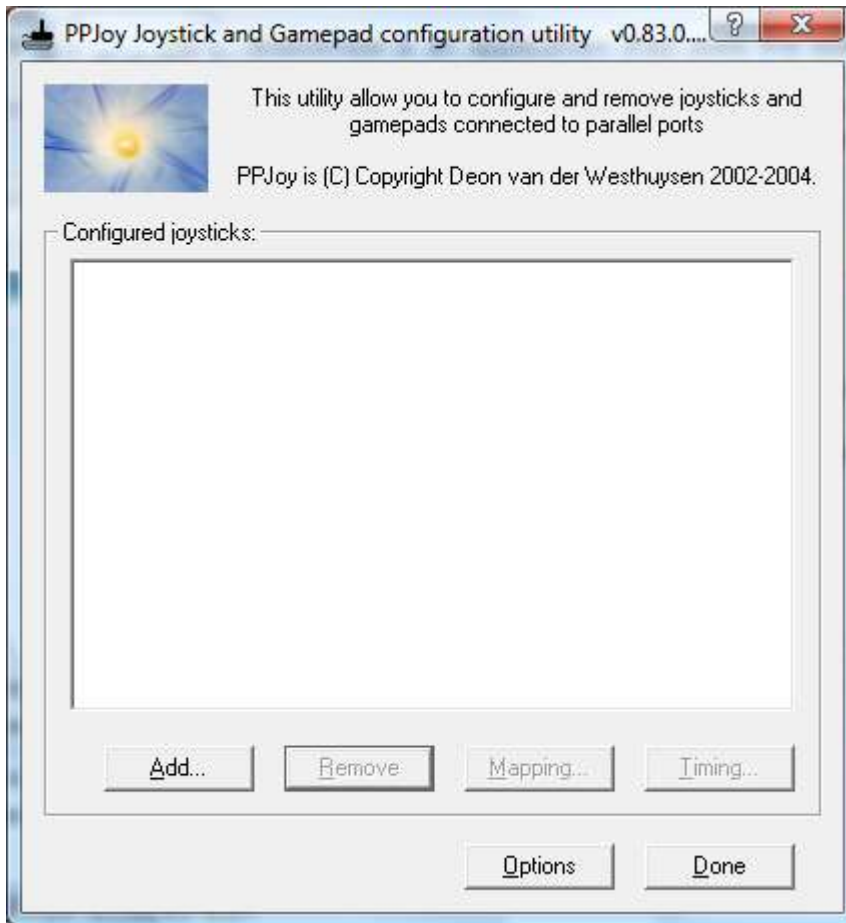
NOTE: if you disable 'Test Mode' even after installation, PPJoy does not function anymore. So you need to have this option always enabled or disable it every time you do not need it.

19. now go to section "Configuring PPJoy Joysticks"

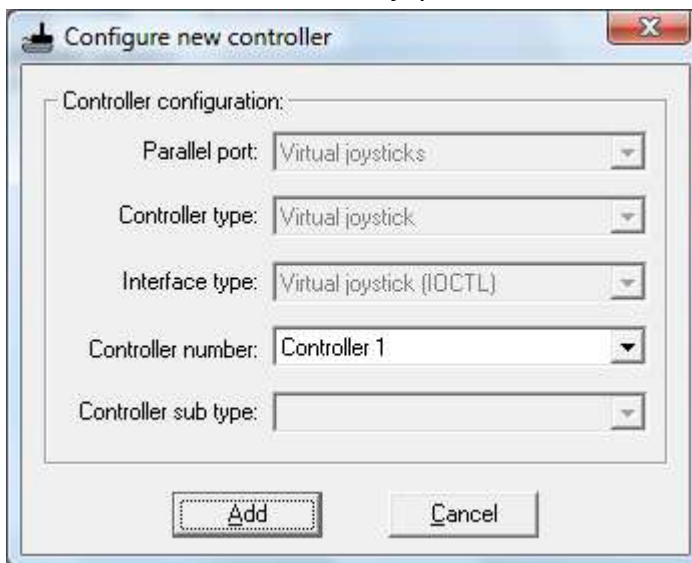
Configuring PPjoy Joysticks:

17. Click the “Configure Joysticks” Shortcut.

18. You get following screen:



19. Now we need to add a virtual joystick, so Click on “Add...”, you get following screen:



20. Make sure that “parallel port” is set to “virtual joysticks” and “controller number” can have any number (as long it’s not above 10) (Please, remind this chosen number!)

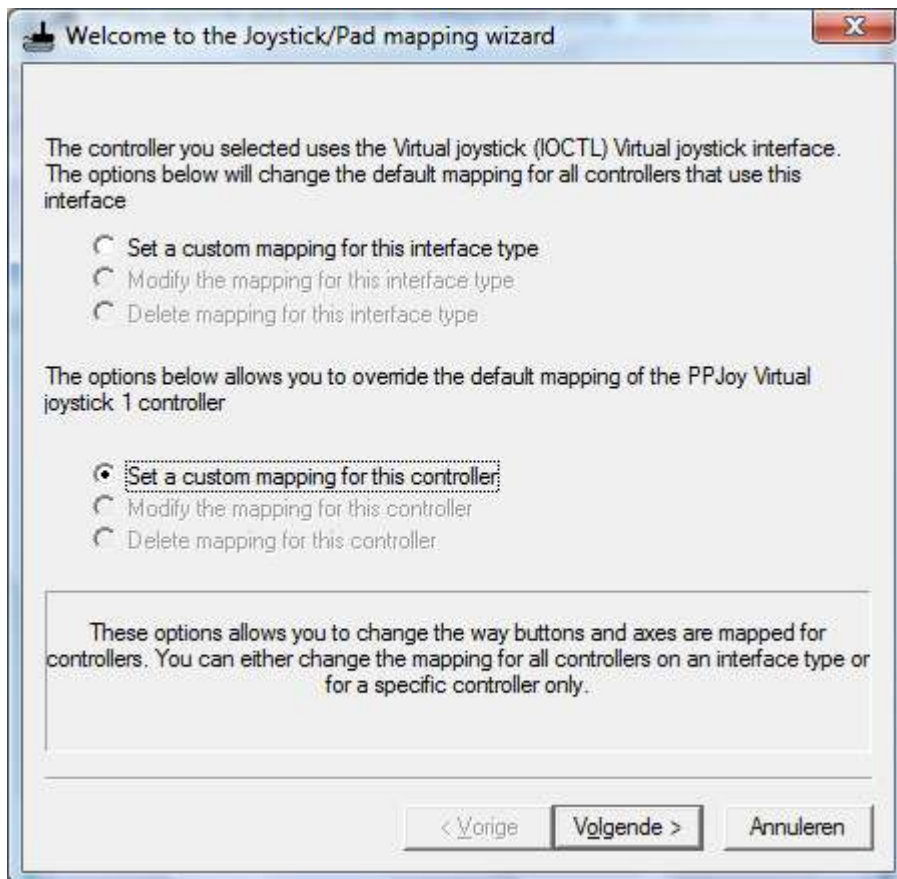
21. Click now on “Add”

22. Now you see following screen:



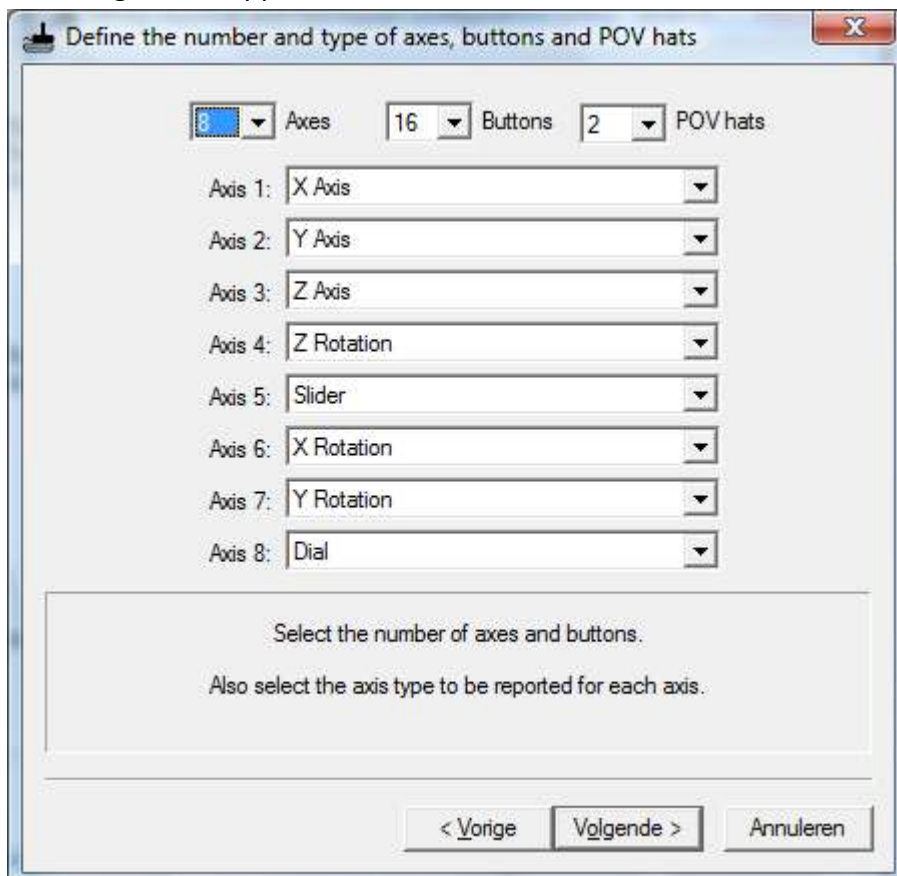
23. Click on the newly created joystick and choose “Mapping”

24. Following screen appears:



25. The option selected is correct, if not choose that option and click Next.

26. Following screen appears

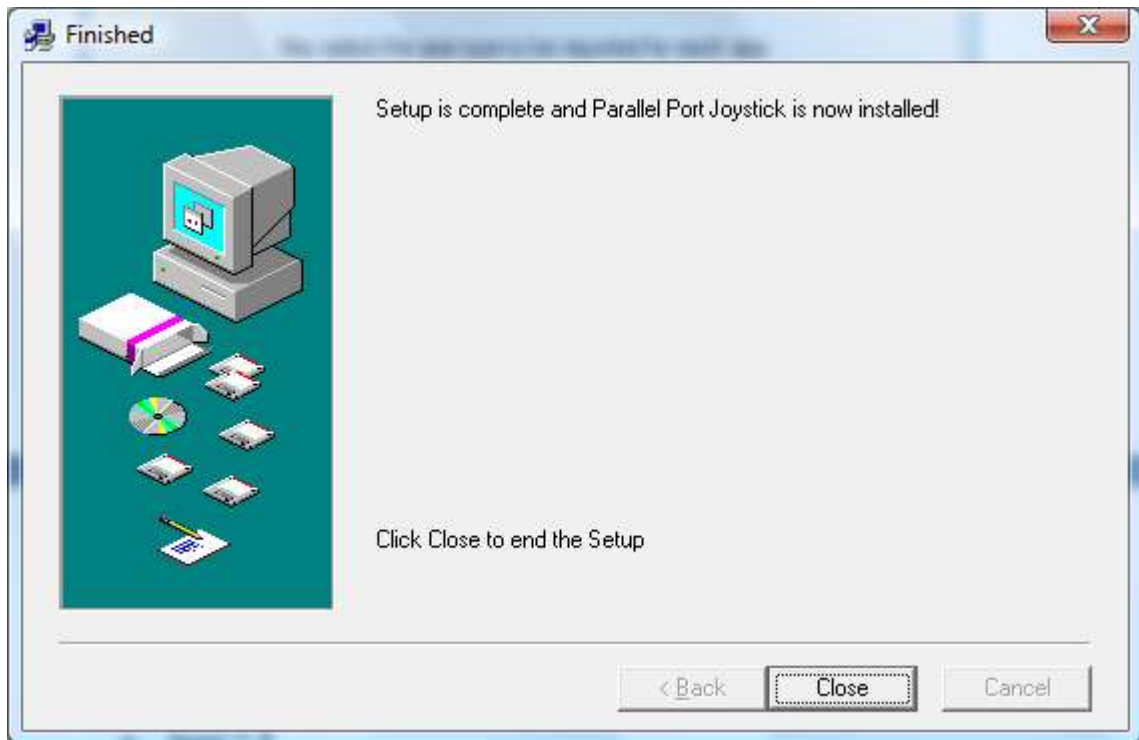


27. Make sure of the following settings:

- a. Axes = 2
- b. Buttons = 8
- c. POV hats = 0

28. And then click 3 times on Next, Finish and then done.

29. Click on Close in the Setup screen



Installing WeeWheel:

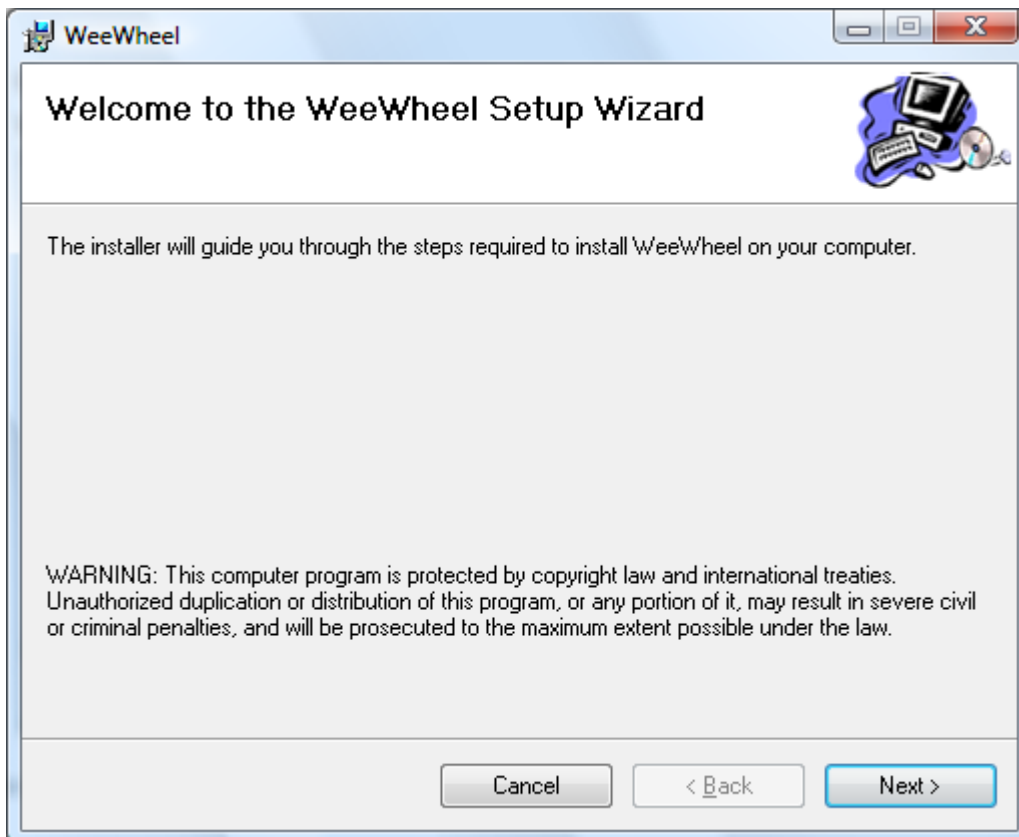
1. Go to <http://www.weewheel.com/WeeWheel.msi>
2. You get following screen:



3. Click on Run (Uitvoeren = Dutch)
4. Following screen appears:

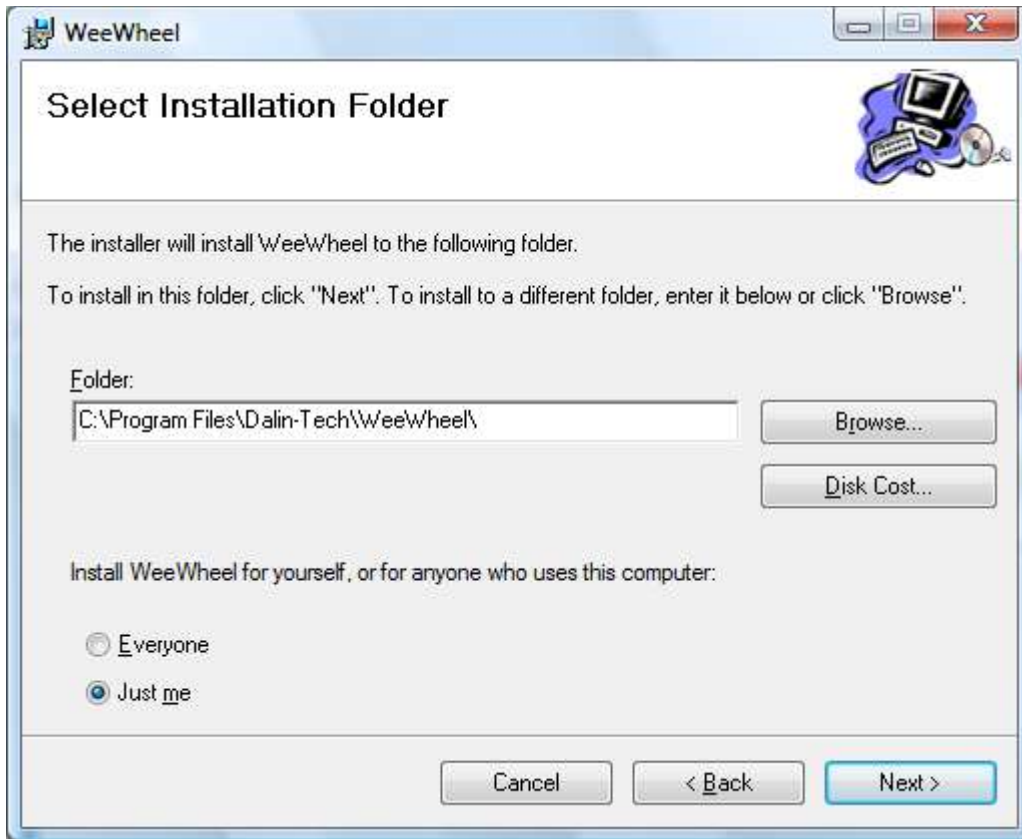


5. Click on Run again
6. Then you see this screen:



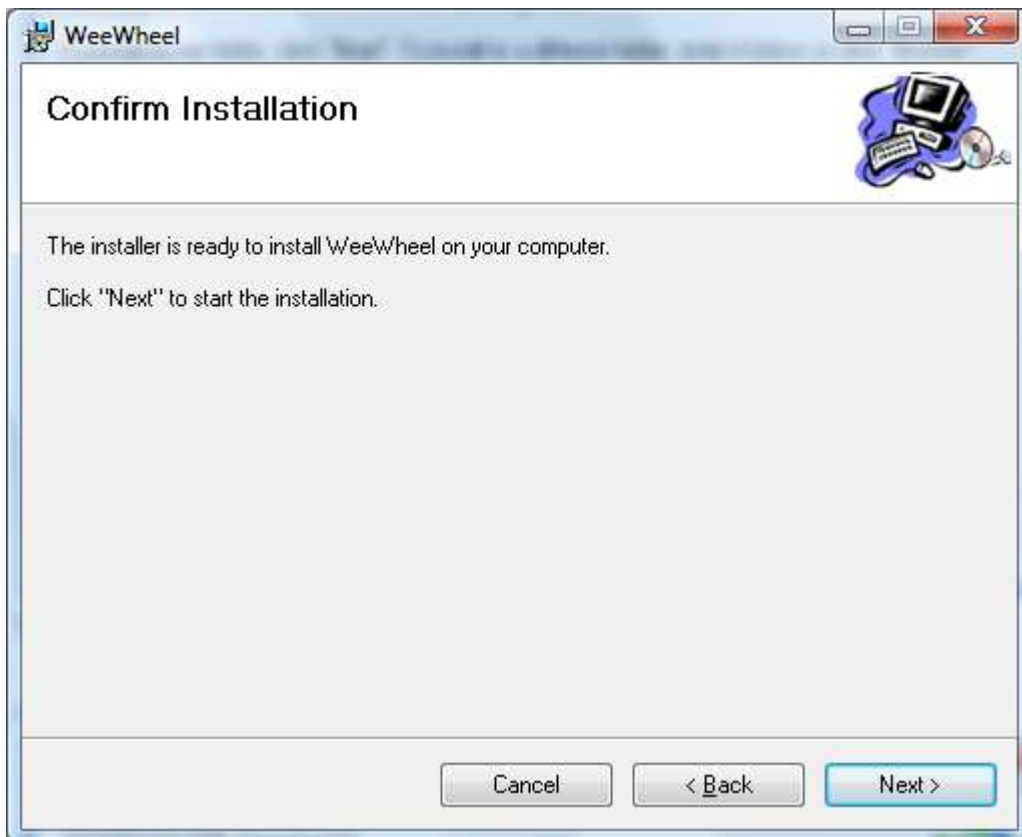
7. Click on "Next >"

8. Following screen appears:



9. Specify the needed settings and click on "Next >"

10. Following screen appears:



11. Click on "Next" the installation process begins.

12. While installation is busy you may get a new screen that a unknown program needs access to your computer, click on "Accept".
13. When installation is ready click on "Close"
14. Now open WeeWheel by clicking on "Start" -> "(All) Program's" -> "WeeWheel" -> "WeeWheel"
15. WeeWheel opens:



16. This is the main screen of WeeWheel, see next sections about how to configure Bluetooth and WeeWheel.

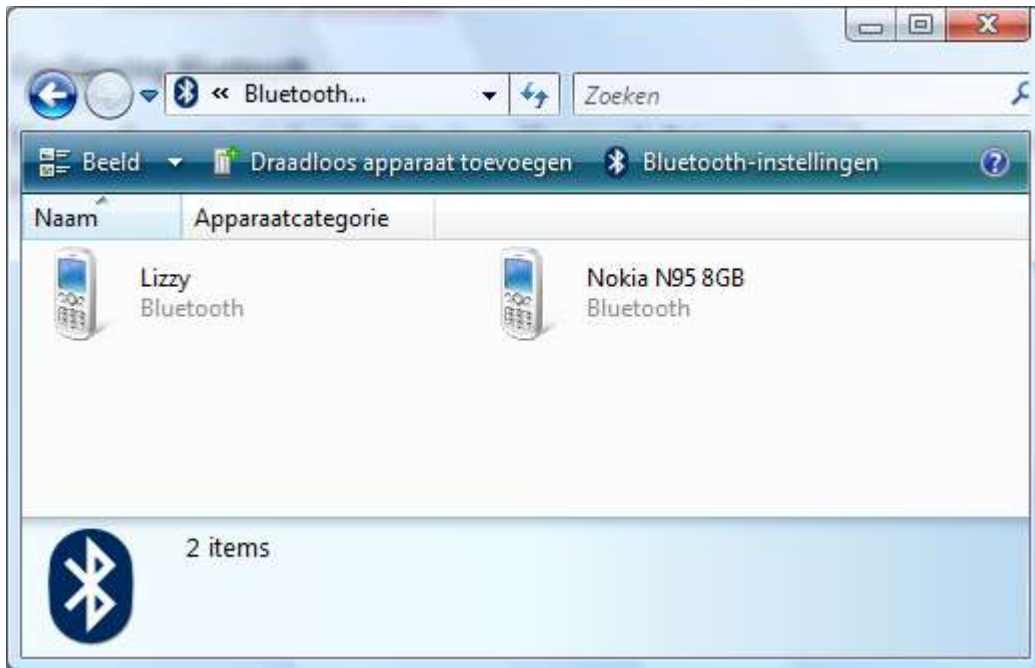
[Configuring Bluetooth](#)

This configuration is for the Windows Bluetooth Drivers, if you have another driver, please refer to the manual on how to configure it!

1. Go to the Control Panel of your System and then select Bluetooth Devices



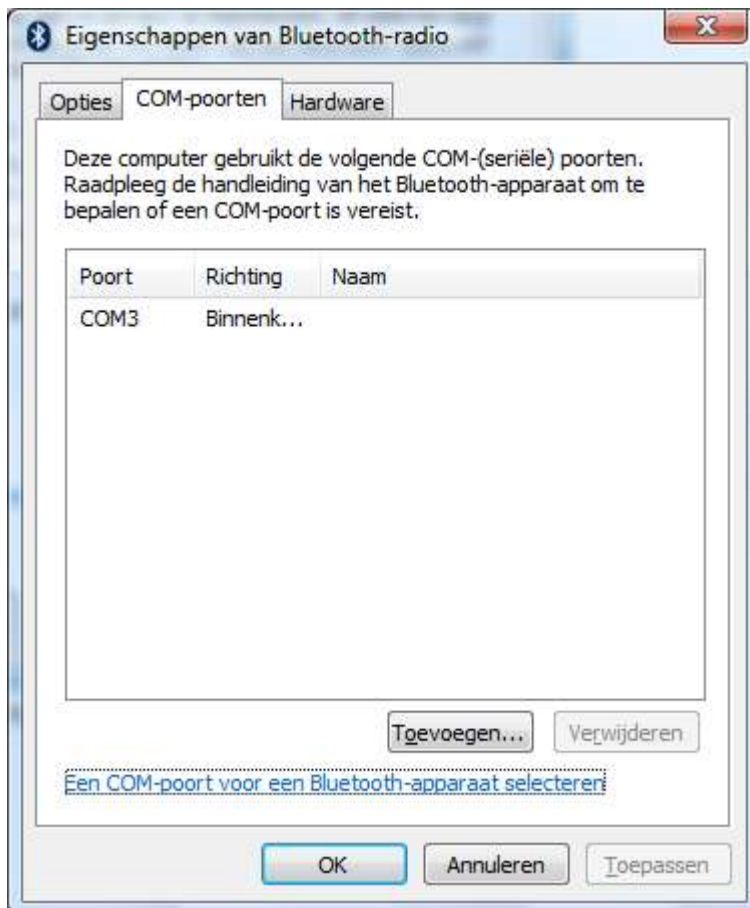
2. Then you get following screen:



3. Click on Bluetooth Settings, following screen appears:



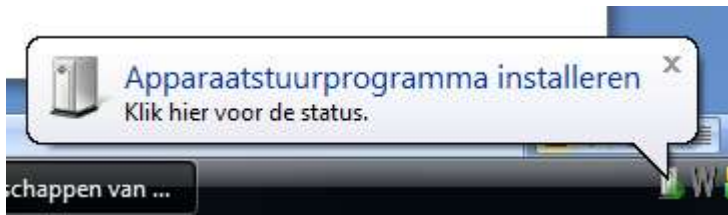
4. Go to COM-ports, Then Following screen appears:



5. If you see already an Incoming COM port, you do not need to do anything! Remember that COM port number and go to next section.
6. If you do not see an Incoming COM port click on Add, following screen appears:



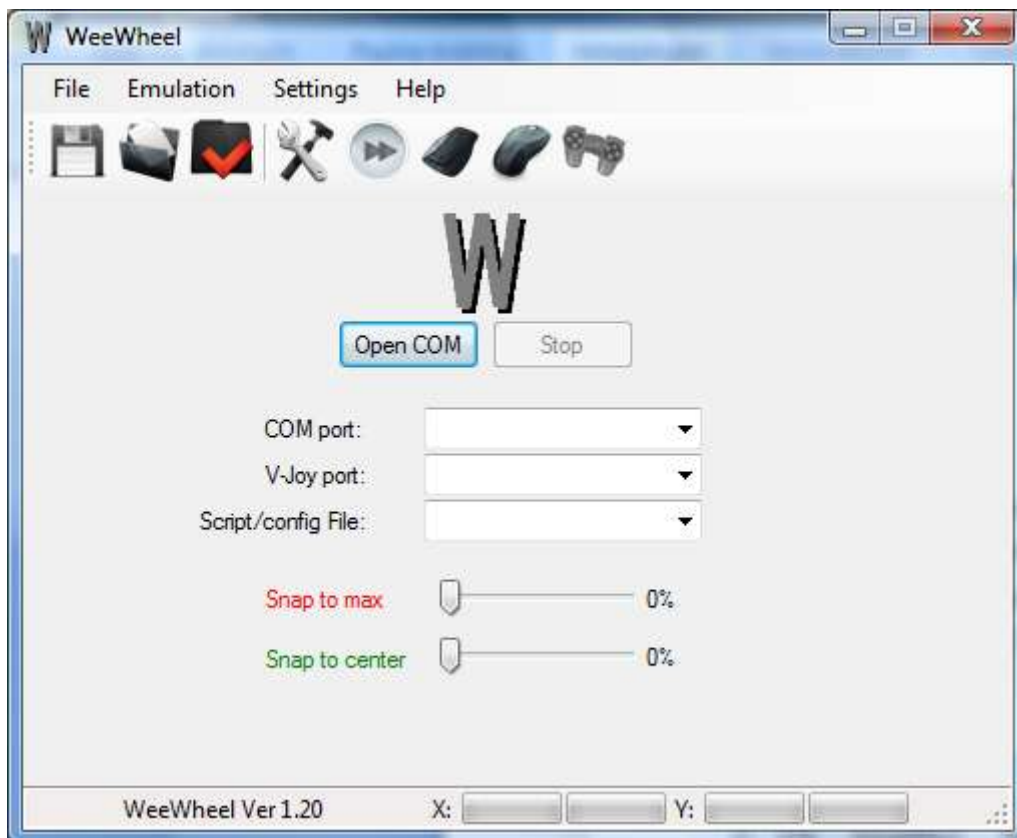
7. Click on OK
8. Now Windows is installing the newly created COM port



9. After that is done you see the new COM port, remember that number (COM 4 in my case) and go to the next section!

[Configuring WeeWheel](#)

This is the main screen of WeeWheel:



As you can see it's still empty, follow these steps to configure it properly!

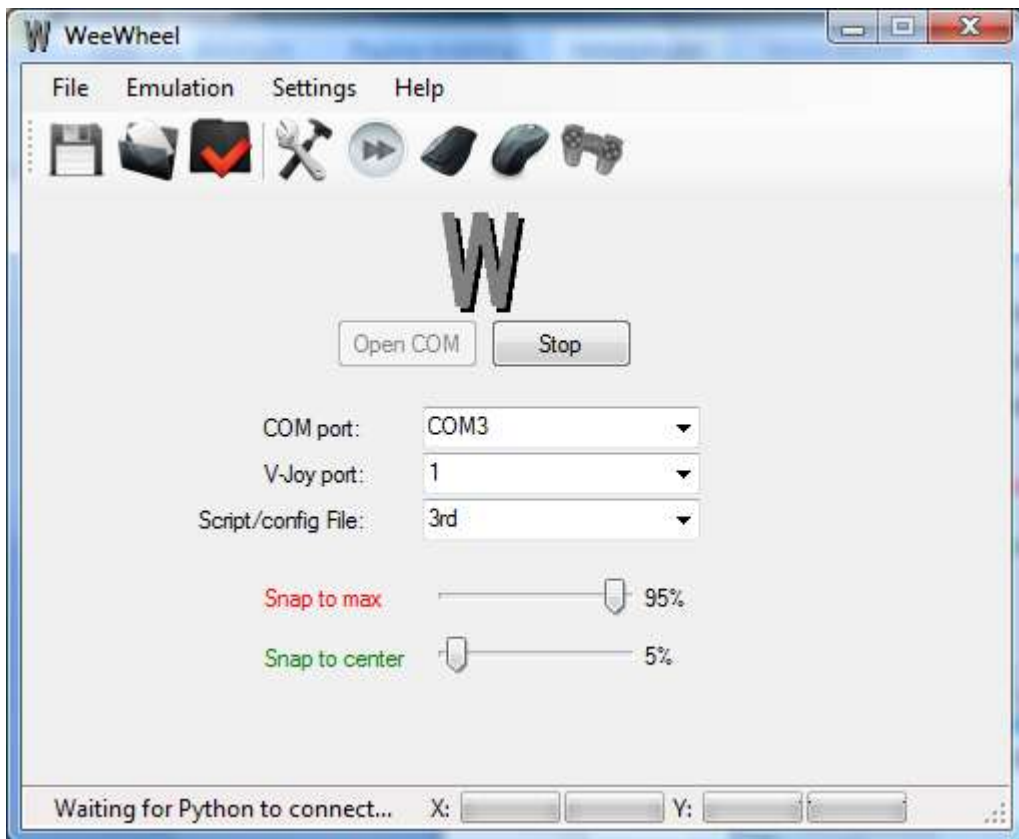
1. First make sure that the Script/Config file is set to the type of your device!



2. Click then on following icon:
3. This will load the default settings of WeeWheel.
4. Please make sure that the COM Port is the to the COM port you've had to remember in step 5 or 9 of section "**Configuring Bluetooth**"
5. Please make also sure that the V-Joy port is set to the Port you've had to remember in step 19 of section "**Installing PPJoy**"
6. Now you get following screen:



7. Now Click on Open COM, this will open the COM port and set WeeWheel in a listening state.



8. Great, WeeWheel is setup and ready to go.

Running/Connecting Python:

1. Open Python on your phone, you get following main screen (this can differ on the version of Python you have)

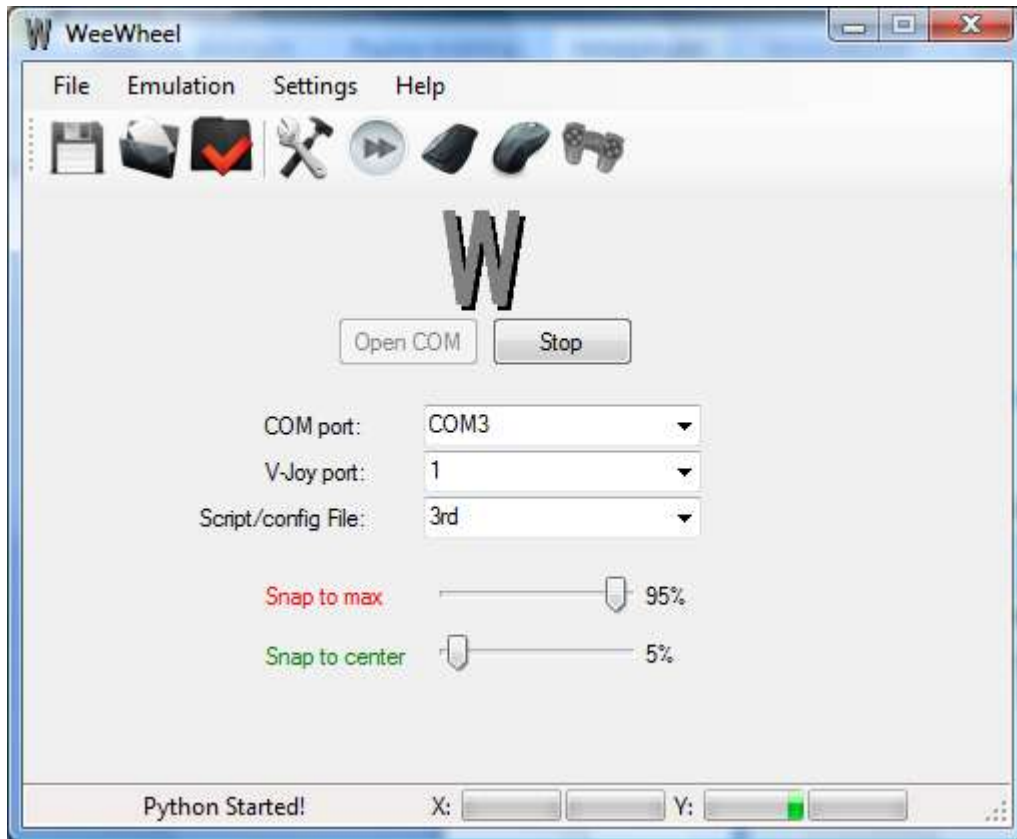


1. Select Options.
2. Select Bluetooth Console.
3. It can now happen that you need to pair your phone with the PC, this is now problem, just pair.
4. After that Python gives a message that Connection is OK.


Fine-tune WeeWheel

Setting up the accelerometer

1. If everything went well, WeeWheel looks as the screen below:



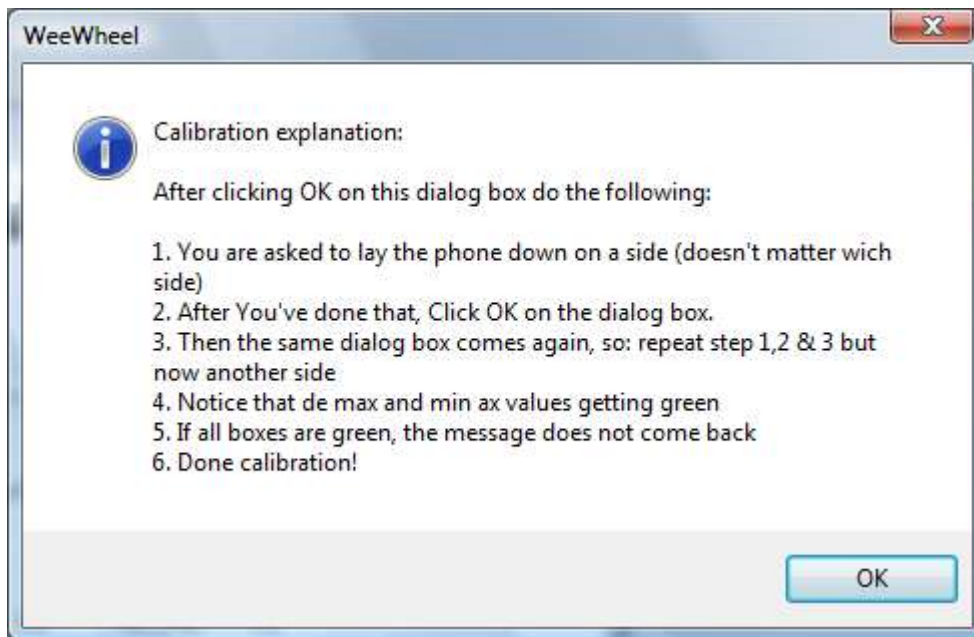
2. Notice the Python Started! Message.

3. Now Click on  Icon

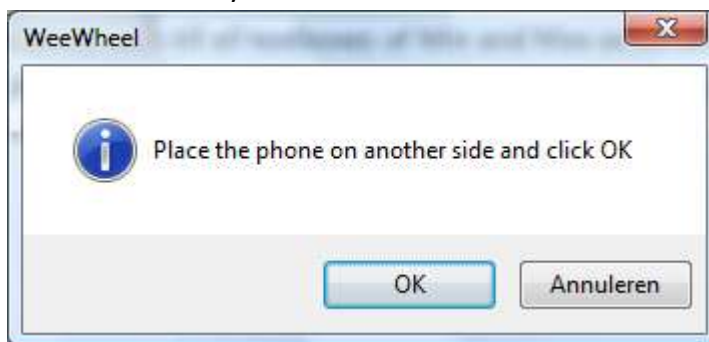
4. Following screen appears:



5. Here you can see following:
 - a. Which ax to use for Joy-Y (Accelerate/Brake) and Joy-X (Steering)
 - b. The Max and Min Values the accelerometer can handle
 - c. The current accelerometer values.
6. First you need to choose the ax that will be used for accelerating and steering. Choose the correct ax, to see if you have the correct ax do the following:
 - a. Chose an ax.
 - b. Check if the X: progress bar moves left if you steer left, and right if you steer right.
 - c. Check if the Y: progress bar moves left if you steer up, and right if you steer down.
 - d. If not, choose another ax and repeat b and c.
7. Not every accelerometer has the exact same values as 300 and -300, so therefore you can calibrate it, click on Calibrate, following message appears on how to calibrate.



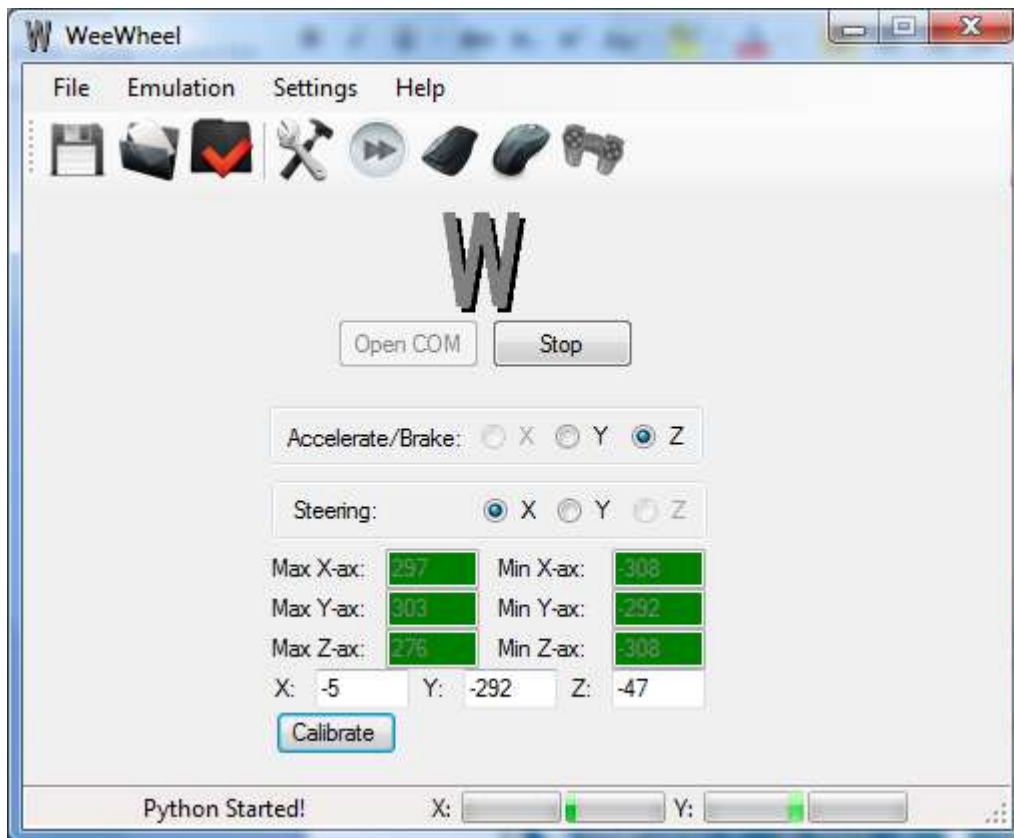
8. Read this carefully and do the calibration!



9. This message comes back till all textboxes of Min and Max ax values are green

10. So, place the phone in a different direction and click OK every time.

11. If everything went well screen looks as follows:



12. Now you see that the axes have different values, this is better for gaming experience!


Setting up Keyboard emulation:

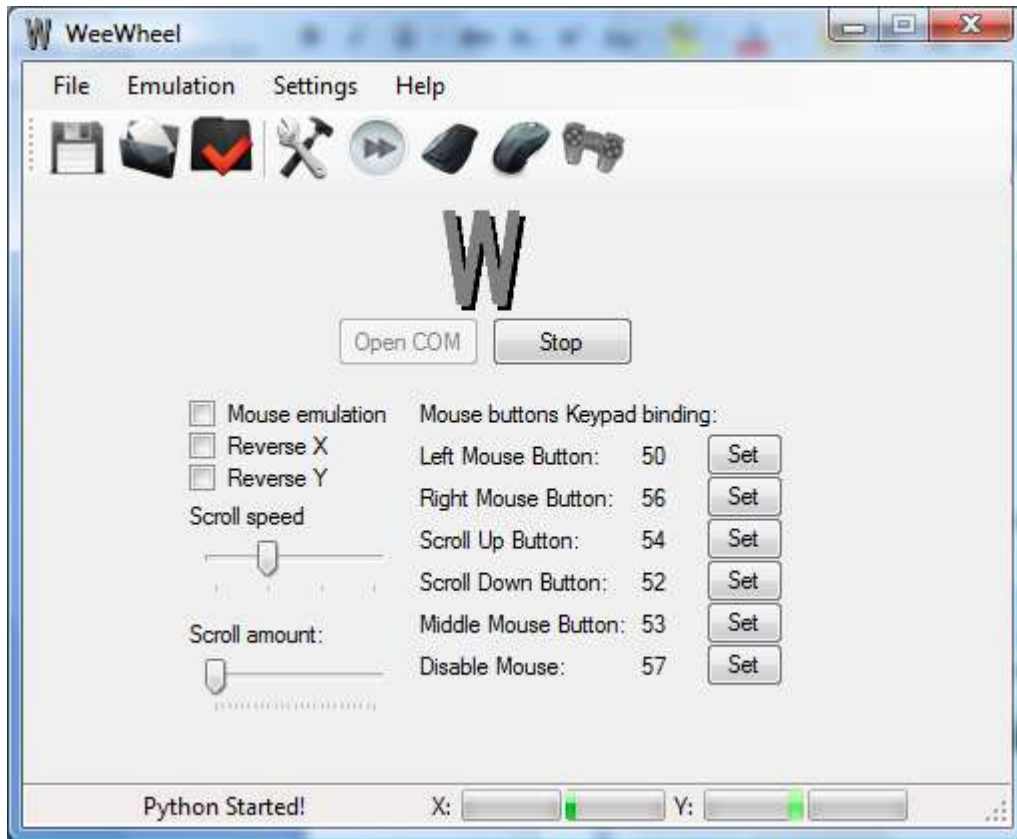
1. Click on following sign:  following screen appears:



2. Here you will find following
 - a. Keyboard key binding
 - b. Keypad Key binding
 - c. Enabling/Disabling keyboard emulation
3. If you want to use keyboard emulation you first need to define some keys, do that by clicking the buttons on the left side of the screen.
4. Example: if you define key W on your keyboard for the Up arrow, means if you move your phone forward, key W is pressed till you move it another direction!
5. If you define CTRL key for 1 Button means if you press the phone button which is defined by Keyboard Button 1 (49 = Keypad1) the CTRL key is pressed until you release keypad 1.
6. Note that keyboard key's can be simultaneously used with joystick keys and mouse keys. If you define keypad 2 for joy2, left mouse button and character W, pressing 2 on your keypad means that all 3 actions will be handled (if mouse, keyboard and joystick emulation are enabled)


Setting up Mouse emulation:

1. Click on following icon:  (Mouse)
2. Then you see following screen:



3. Here you can disable and enable the mouse movement.
4. Note: the pointer does not reach the corners, but WeeWheel is for gaming and not for controlling the PC.
5. You can define the left, middle & right mouse button and a key for disabling/enabling the mouse
6. Also you can define the scroll buttons and scroll speed/amount.
7. Use the reverse checkboxes if the mouse moves to the wrong direction.
8. Note that mouse key's can be simultaneously used with joystick keys and keyboard keys. If you define keypad 2 for joy2, left mouse button and character W, pressing 2 on your keypad means that all 3 actions will be handled (if mouse, keyboard and joystick emulation are enabled)


Setting Joystick Emulation

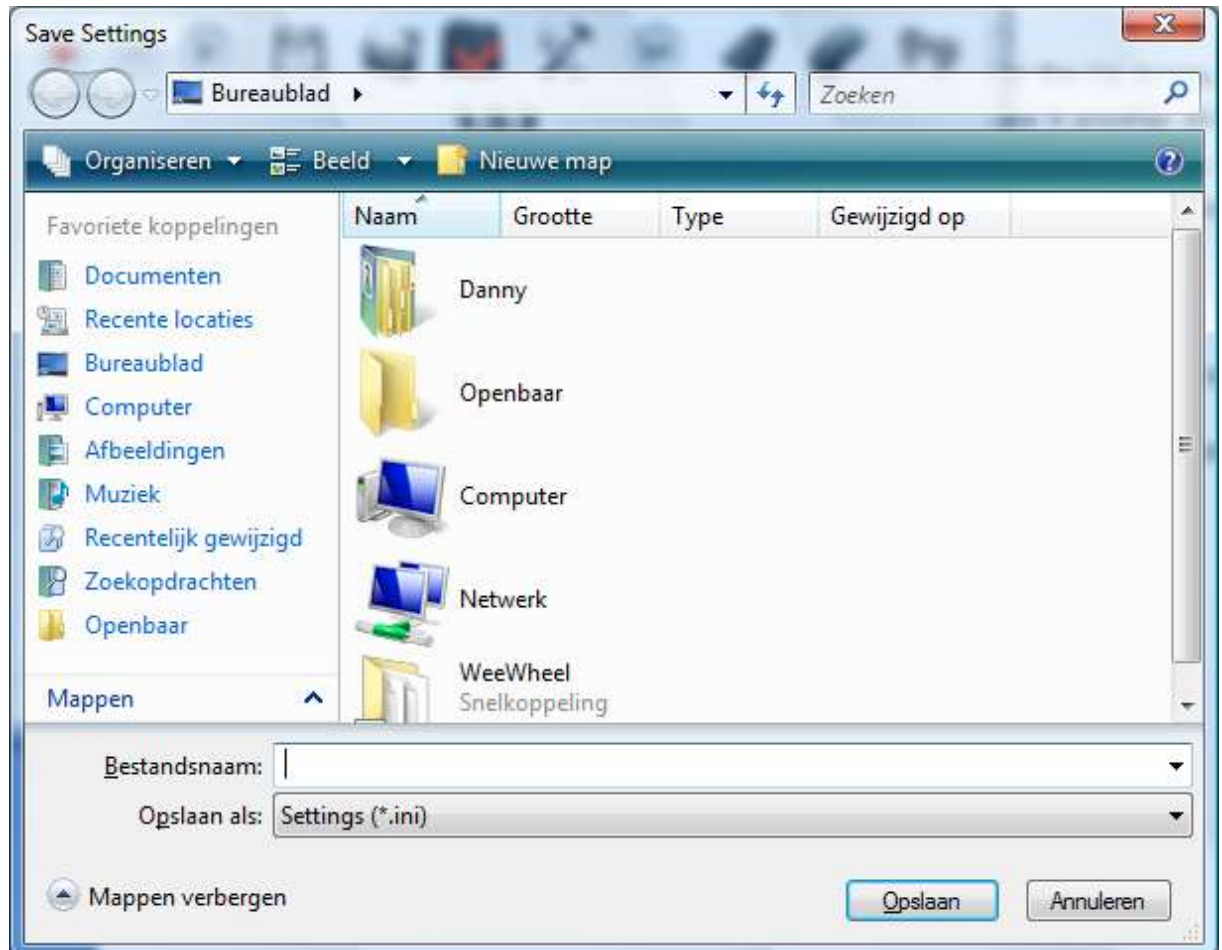
1. Click on the joystick icon: 
2. Following screen appears.






3. As you can see, it's similar to the mouse control except that the joystick has 8 buttons which can be defined.

Using Configuration files

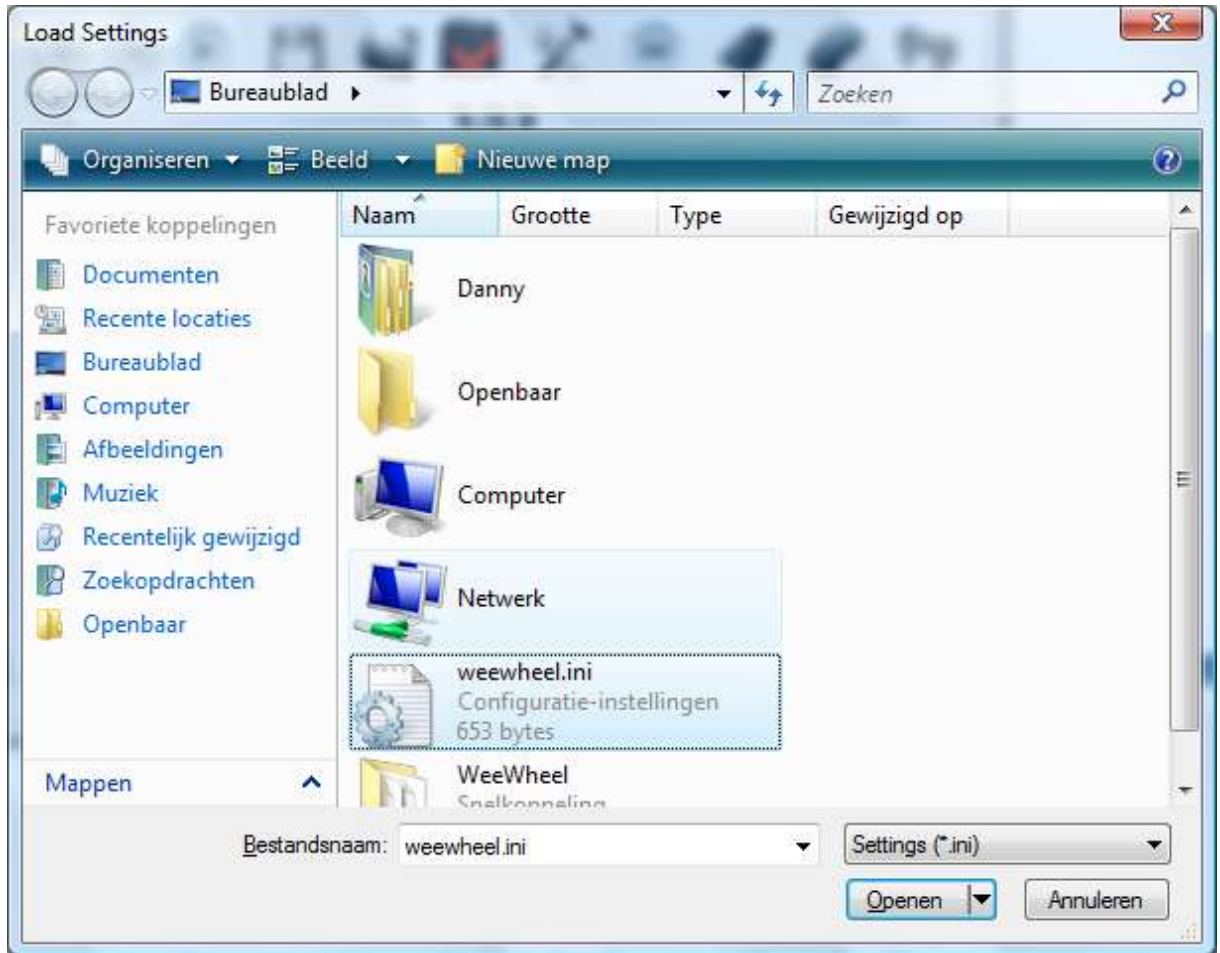
1. If you have done setting up WeeWheel, please save this configuration by clicking the following icon:  then following screen appears where you can save the config.



2. Note: When saving the configuration file, the file cannot be saved anywhere, because WeeWheel does not need administrator rights (in vista) so it's not possible to save the file in "C:\Program Files", "C:\Windows", and other user profiles.
3. If you want to save in these locations (which is not recommended) do the following:
 - a. Save the file for example on your desktop
 - b. Close WeeWheel
 - c. Right Click on the WeeWheel Icon
 - d. Choose "Run as Administrator"
 - e. And then load the file with the  button
 - f. And then save the file with the  button in the desired location.
4. Every time you open WeeWheel, the program asks you if you want to load the last used/saved configuration file. You need to load a configuration file or just use the defaults or WeeWheel will not work!

5. If you want to load a configuration file while WeeWheel is started click the  button, note: WeeWheel stops and closes the connection to your phone when you load a new configuration file.

6. Following screen appears:



7. Go to the location of the file and double click on it. The configuration file is in INI format, and can be tweaked by your own 😊

8. Now the configuration file is loaded and can be used directly.

9. Note: not saved configuration files are lost after WeeWheel has been closed!

WeeWheel and Touch devices:

WeeWheel itself does currently NOT support touch devices (we did in earlier devices, but we have learned that it could be better for free :P)

If you want to use touch support in WeeWheel, you can do following (Thanks to Siraj AKA Apache :))

1. Download the complete package: http://www.sirajsoft.com/wp-content/uploads/2009/09/WFvirtualKeyboard_0.9.4.mod.sis
2. Transfer the file to your Phone and do a default install.
3. After the installation has been completed open the application from the menu (Note: it's possible that you see only blocks instead of the application name, like the screenshot below)



4. Select vk2_english from the menu by tapping it from 5800 n-gage to vk_2, like screenshot below:



5. You will see the VK icon in the top of screen:



6. now click it and select keypad 1 for virtual keypad



7. This is the keypad that looks mostly on non touch devices.
8. Now go to Python and have fun playing :)

Scripting guidelines:

With WeeWheel 1.16 it is possible to write your own scripts that can be send to different phone's. Now only 3rd and 5th edition devices of the brand Nokia are supported, but it is possible that we can achieve the same goal on Windows® Mobile devices (With or Without Python)

If you know how to script in Python on Windows® Mobile devices you can make your own script.

Scripts must be stored in [INSTALL PATH]\Scripts (f.e. C:\Program Files\Dalin-Tech\WeeWheel\Scripts) also must the scripts have the .py extension. (If you do not want to script via Python cause you want to make a separate program that can be installed on the mobile device, create a empty dummy file (f.e. dummy.py))

Each script MUST also have a configuration file, configuration files can be created through WeeWheel and must be stored in [INSTALL PATH]\Configuration (f.e. C:\Program Files\Dalin-Tech\WeeWheel\Configuration) note that configuration file must have the same name as the script file, but with following extension: .ini

Feeding WeeWheel:

The accelerometer values must have following format: x:y:z (f.e. 279:307:25)

The keyboard values must have following format: KeyDown:50, KeyUp:50 Where 50 represents the key that is pressed on the mobile device (do not send key names!)

Every event needs to be sent ONCE so don't flood for example KeyDown:50, this will hookup and eventually crash WeeWheel. If sent One time, WeeWheel will hold down the keyboard/mouse/joystick button that is related to key 50 of your mobile device, till the KeyUp:50 command is sent.

Please, feel free to post your application/script on our forum: <http://www.weewheel.com/forum>

FAQ:

Q: I'm getting following error: 'Error: There was a communication error with the joystick device!'

A: The PPJoy driver is not found, did you install it (correct)?

Q: I'm getting following error: 'Error: There was a problem opening the joystick device!'

A: Make sure the selected V-Joy port exist in the PPJoy configuration panel as virtual joystick port.

Q: When I choose load default settings, WeeWheel does not load anything or crashes with an error report error!

A: Yes, this is still an issue, can be solved by Remove and Installing WeeWheel.

Q: WeeWheel is very slow!

A: Close WeeWheel, Close python, sometimes it can happen that there are 2 or 3 connections open to the phone, which makes it very slow.